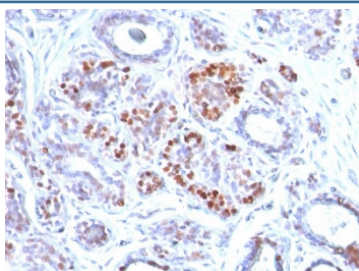


GATA3 Antibody [clone GATA3/2442] (V3995)

Catalog No.	Formulation	Size
V3995-100UG	0.2 mg/ml in 1X PBS with 0.1 mg/ml BSA (US sourced) and 0.05% sodium azide	100 ug
V3995-20UG	0.2 mg/ml in 1X PBS with 0.1 mg/ml BSA (US sourced) and 0.05% sodium azide	20 ug
V3995SAF-100UG	1 mg/ml in 1X PBS; BSA free, sodium azide free	100 ug
V3995IHC-7ML	Prediluted in 1X PBS with 0.1 mg/ml BSA (US sourced) and 0.05% sodium azide; *For IHC use only*	7 ml

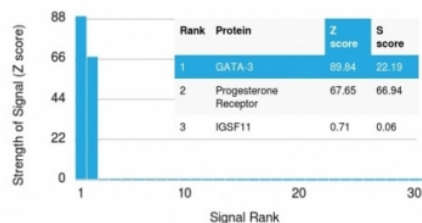
[Bulk quote request](#)

Availability	1-3 business days
Species Reactivity	Human
Format	Purified
Clonality	Monoclonal (mouse origin)
Isotype	Mouse IgG2b, kappa
Clone Name	GATA3/2442
Purity	Protein G affinity chromatography
UniProt	P23771
Localization	Nuclear
Applications	Immunohistochemistry (FFPE) : 1-2ug/ml for 30 min at RT
Limitations	This GATA3 antibody is available for research use only.



IHC testing of FFPE human breast carcinoma with GATA3 antibody. Required HIER: boil tissue sections in 10mM citrate buffer, pH 6, for 10-20 min and allow to cool prior to testing.

Human Protein Microarray Specificity Validation



Analysis of HuProt(TM) microarray containing more than 19,000 full-length human proteins using GATA3 antibody (clone GATA3/2442). These results demonstrate the foremost specificity of the GATA3/2442 mAb. Z- and S- score: The Z-score represents the strength of a signal that an antibody (in combination with a fluorescently-tagged anti-IgG secondary Ab) produces when binding to a particular protein on the HuProt(TM) array. Z-scores are described in units of standard deviations (SD's) above the mean value of all signals generated on that array. If the targets on the HuProt(TM) are arranged in descending order of the Z-score, the S-score is the difference (also in units of SD's) between the Z-scores. The S-score therefore represents the relative target specificity of an Ab to its intended target.

Description

GATA3 is a zinc finger transcription factor and plays an important role in promoting and directing cell proliferation, development, and differentiation in many tissues and cell types. GATA3 expression is primarily seen in breast and urothelial carcinomas. Therefore, GATA3 antibody can be useful in the identification of unknown primary carcinoma when carcinomas of the breast or bladder are a possibility.

Application Notes

Optimal dilution of the GATA3 antibody should be determined by the researcher.

1. The prediluted format is supplied in a dropper bottle and is optimized for use in IHC. After epitope retrieval step (if required), drip mAb solution onto the tissue section and incubate at RT for 30 min.

Immunogen

A portion of amino acids 357-463 from the human protein were used as the immunogen for this GATA3 antibody.

Storage

Store the GATA3 antibody at 2-8oC (with azide) or aliquot and store at -20oC or colder (without azide).