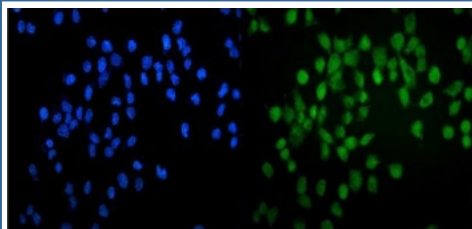


GATA2 Antibody (RQ5727)

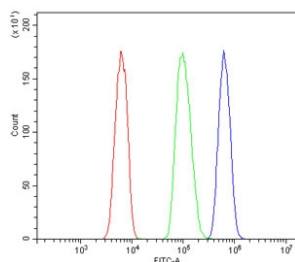
Catalog No.	Formulation	Size
RQ5727	0.5mg/ml if reconstituted with 0.2ml sterile DI water	100 ug

Bulk quote request

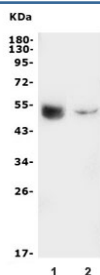
Availability	1-3 business days
Species Reactivity	Human
Format	Antigen affinity purified
Clonality	Polyclonal (rabbit origin)
Isotype	Rabbit IgG
Purity	Affinity purified
Buffer	Lyophilized from 1X PBS with 2% Trehalose and 0.025% sodium azide
UniProt	P23769
Applications	Western Blot : 0.5-1ug/ml Flow Cytometry : 1-3ug/million cells Immunofluorescence : 2-4ug/ml Direct ELISA : 0.1-0.5ug/ml
Limitations	This GATA2 antibody is available for research use only.



Immunofluorescent staining of FFPE human A431 cells with GATA2 antibody (green) and DAPI nuclear stain (blue). HIER: steam section in pH6 citrate buffer for 20 min.



Flow cytometry testing of human HL-60 cells with GATA2 antibody at 1ug/million cells (blocked with goat sera); Red=cells alone, Green=isotype control, Blue= GATA2 antibody.



Western blot testing of human 1) K562 and 2) HL-60 lysate with GATA2 antibody.
Predicted molecular weight ~51 kDa.

Description

GATA2 (GATA binding protein 2) is a human gene which makes a protein called GATA binding protein 2 - a transcription factor. The GATA family of transcription factors, which contain zinc fingers in their DNA binding domain, have emerged as candidate regulators of gene expression in hematopoietic cells. Ciciotte et al.(1997) mapped the mouse Gata2 gene to chromosome 6 by study of DNA from an interspecific backcross panel. They pointed out that the human gene had been mapped to chromosome 3 by Dorfman et al.(1992) using DNA from a panel of 12 rodent/human hybrids containing various human chromosomes and applying Southern blot analysis. By exon trapping using a PAC contig spanning a breakpoint region associated with myeloid leukemia, Wieser et al.(2000) mapped the GATA2 gene to chromosome 3q21. GATA2 is transcribed from telomere to centromere. GATA2 is expressed in hematopoietic progenitors, including early erythroid cells, mast cells, and megakaryocytes, and also in nonhematopoietic embryonic stem cells.

Application Notes

Optimal dilution of the GATA2 antibody should be determined by the researcher.

Immunogen

Recombinant human protein (amino acids D23-S288) was used as the immunogen for the GATA2 antibody.

Storage

After reconstitution, the GATA2 antibody can be stored for up to one month at 4°C. For long-term, aliquot and store at -20°C. Avoid repeated freezing and thawing.