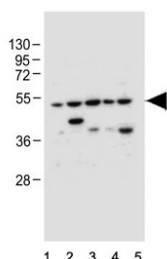


Gasdermin E Antibody / GSDME / DFNA5 (F55076)

Catalog No.	Formulation	Size
F55076-0.2ML	In 1X PBS, pH 7.4, with 0.09% sodium azide	0.2 ml
F55076-0.05ML	In 1X PBS, pH 7.4, with 0.09% sodium azide	0.05 ml

[Bulk quote request](#)

Availability	1-2 business days
Species Reactivity	Human
Format	Purified
Clonality	Polyclonal (rabbit origin)
Isotype	Rabbit Ig
UniProt	O60443
Applications	Western Blot : 1:500-1:1000
Limitations	This Gasdermin E antibody is available for research use only.



Western blot testing of human 1) HeLa, 2) U-251 MG, 3) U-87 MG, 4) U-2 OS and 5) MCF7 cell lysate with Gasdermin E antibody. Predicted molecular weight ~55 kDa.

Description

Gasdermin E, also known as GSDME or DFNA5, is a protein that was originally identified as a member of the gasdermin family, which are known for their role in inflammation and cell death. While other members of this family have been extensively studied, Gasdermin E remained relatively unexplored until recently. One of the most exciting findings regarding Gasdermin E is its role in pyroptosis, a form of cell death that is triggered by inflammasomes. Pyroptosis is a vital part of the immune response, as it helps to eliminate infected or damaged cells. Gasdermin E has been shown to be crucial for the execution of pyroptosis, acting as a pore-forming protein that allows for the release of pro-inflammatory cytokines and other molecules from the cell. In addition to its role in cell death, Gasdermin E has also been implicated in a variety of other cellular processes, including cell proliferation, migration, and differentiation. Studies have shown that dysregulation of Gasdermin E can contribute to the development of various diseases, such as cancer, autoimmune disorders, and neurodegenerative conditions.

Application Notes

Titration of the Gasdermin E antibody may be required due to differences in protocols and secondary/substrate sensitivity.

Immunogen

A portion of amino acids 55-87 from the human protein was used as the immunogen for this Gasdermin E antibody.

Storage

Aliquot the Gasdermin E antibody and store frozen at -20oC or colder. Avoid repeated freeze-thaw cycles.