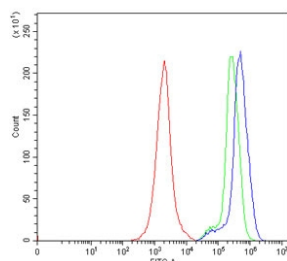


## GAS2 Antibody / Growth arrest-specific protein 2 (RQ6872)

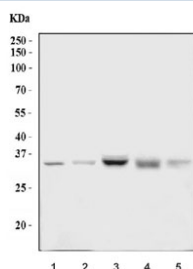
Catalog No.	Formulation	Size
RQ6872	0.5mg/ml if reconstituted with 0.2ml sterile DI water	100 ug

**Bulk quote request**

<b>Availability</b>	1-3 business days
<b>Species Reactivity</b>	Human, Mouse, Rat
<b>Format</b>	Antigen affinity purified
<b>Clonality</b>	Polyclonal (rabbit origin)
<b>Isotype</b>	Rabbit IgG
<b>Purity</b>	Antigen affinity purified
<b>Buffer</b>	Lyophilized from 1X PBS with 2% Trehalose
<b>UniProt</b>	O43903
<b>Applications</b>	Western Blot : 1-2ug/ml Flow Cytometry : 1-3ug/million cells
<b>Limitations</b>	This GAS2 antibody is available for research use only.



Flow cytometry testing of human Jurkat cells with GAS2 antibody at 1ug/million cells (blocked with goat sera); Red=cells alone, Green=isotype control, Blue= GAS2 antibody.



Western blot testing of 1) human Jurkat, 2) human HepG2, 3) rat liver, 4) mouse kidney and 5) mouse liver tissue lysate with GAS2 antibody. Predicted molecular weight ~35 kDa.

## Description

Growth arrest-specific protein 2 is a protein that in humans is encoded by the GAS2 gene. The protein encoded by this gene is a caspase-3 substrate that plays a role in regulating microfilament and cell shape changes during apoptosis. It can also modulate cell susceptibility to p53-dependent apoptosis by inhibiting calpain activity. Alternative splicing results in multiple transcript variants.

## Application Notes

Optimal dilution of the GAS2 antibody should be determined by the researcher.

## Immunogen

Amino acids HQYSQWLASRHEANLLPMKED from the human protein were used as the immunogen for the GAS2 antibody.

## Storage

After reconstitution, the GAS2 antibody can be stored for up to one month at 4°C. For long-term, aliquot and store at -20°C. Avoid repeated freezing and thawing.