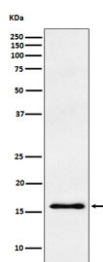


Gamma Synuclein Antibody [clone ADEE-19] (RQ4794)

Catalog No.	Formulation	Size
RQ4794	Antibody in PBS with 0.02% sodium azide, 50% glycerol and 0.4-0.5mg/ml BSA	100 ul

[Bulk quote request](#)

Availability	1-2 weeks
Species Reactivity	Human, Rat
Format	Purified
Clonality	Rabbit Monoclonal
Isotype	Rabbit IgG
Clone Name	ADEE-19
Purity	Affinity purified
UniProt	O76070
Applications	Western Blot : 1:500-1:2000
Limitations	This Gamma Synuclein antibody is available for research use only.



Western blot testing of human fetal brain lysate with Gamma Synuclein antibody.
Expected molecular weight: 13-17 kDa.

Description

Gamma Synuclein plays a role in neurofilament network integrity. May be involved in modulating axonal architecture during development and in the adult. In vitro, increases the susceptibility of neurofilament-H to calcium-dependent proteases. [UniProt]

Application Notes

Optimal dilution of the Gamma Synuclein antibody should be determined by the researcher.

Immunogen

A synthetic peptide specific to human Gamma Synuclein / SNCG was used as the immunogen for the Gamma Synuclein antibody.

Storage

Store the Gamma Synuclein antibody at -20oC.