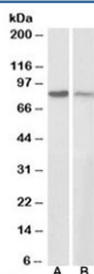


Gamma Catenin Antibody / Plakoglobin (R34108)

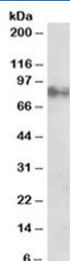
Catalog No.	Formulation	Size
R34108-100UG	0.5 mg/ml in 1X TBS, pH7.3, with 0.5% BSA (US sourced) and 0.02% sodium azide	100 ug

[Bulk quote request](#)

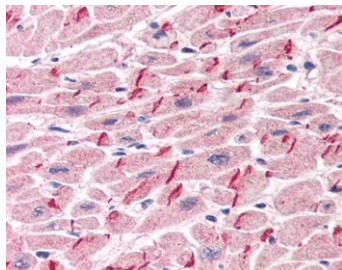
Availability	1-3 business days
Species Reactivity	Human, Mouse, Rat
Predicted Reactivity	Dog, Pig
Format	Antigen affinity purified
Clonality	Polyclonal (goat origin)
Isotype	Goat Ig
Purity	Antigen affinity
Gene ID	3728
Localization	Cell surface, cytoplasmic, cell junctions
Applications	Western Blot : 0.3-1ug/ml IHC (FFPE) : 5ug/ml ELISA (peptide) LOD : 1:32000
Limitations	This Gamma Catenin antibody is available for research use only.



Western blot testing of human A431 [A] and mouse NIH3T3 [B] cell lysates with Gamma Catenin antibody at 0.3ug/ml. Predicted molecular weight ~82 kDa.



Western blot of rat eye lysate with Gamma Catenin antibody at 1ug/ml. Predicted molecular weight ~82 kDa.



IHC testing of FFPE human heart tissue with Gamma Catenin antibody at 5ug/ml. Required HIER: steamed antigen retrieval with pH6 citrate buffer; AP-staining.

Description

Additional name(s) for this target protein: Junction plakoglobin; JUP

Application Notes

Optimal dilution of the Gamma Catenin antibody should be determined by the researcher.

Immunogen

Amino acids GLRPPYPTADHMLA were used as the immunogen for this Gamma Catenin antibody.

Storage

Aliquot and store the Gamma Catenin antibody at -20oC.