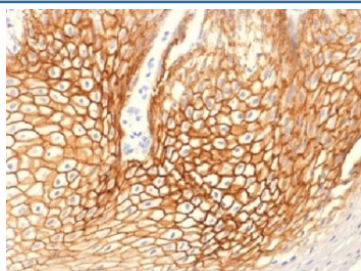


Gamma Catenin Antibody / Plakoglobin [clone CTNG/1664] (V3236)

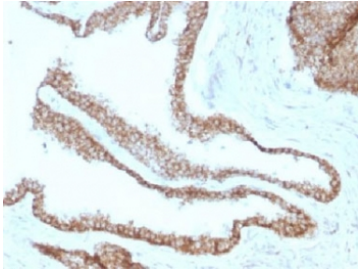
| Catalog No. | Formulation | Size |
|----------------|--|--------|
| V3236-100UG | 0.2 mg/ml in 1X PBS with 0.1 mg/ml BSA (US sourced) and 0.05% sodium azide | 100 ug |
| V3236-20UG | 0.2 mg/ml in 1X PBS with 0.1 mg/ml BSA (US sourced) and 0.05% sodium azide | 20 ug |
| V3236SAF-100UG | 1 mg/ml in 1X PBS; BSA free, sodium azide free | 100 ug |

Bulk quote request

| | |
|---------------------------|---|
| Availability | 1-3 business days |
| Species Reactivity | Human |
| Format | Purified |
| Clonality | Monoclonal (mouse origin) |
| Isotype | Mouse IgG1, kappa |
| Clone Name | CTNG/1664 |
| Purity | Protein G affinity chromatography |
| UniProt | P14923 |
| Localization | Cell surface, cytoplasmic, cell junctions |
| Applications | Flow Cytometry : 1-2ug/10 ⁶ cells Immunofluorescence : 1-2ug/ml Western Blot : 1-2ug/ml Immunohistochemistry (FFPE) : 1-2ug/ml for 30 min at RT |
| Limitations | This Gamma Catenin antibody is available for research use only. |



IHC testing of FFPE human cervical carcinoma with Gamma Catenin antibody (clone CTNG/1483). Required HIER: boil tissue sections in 10mM Tris with 1mM EDTA, pH 9, for 10-20 min.



IHC testing of FFPE human prostate carcinoma with Gamma Catenin antibody (clone CTNG/1483). Required HIER: boil tissue sections in 10mM Tris with 1mM EDTA, pH 9, for 10-20 min.

Description

Application Notes

The stated application concentrations are suggested starting amounts. Titration of the Gamma Catenin antibody may be required due to differences in protocols and secondary/substrate sensitivity.

Immunogen

Recombinant human protein was used as the immunogen for the Gamma Catenin antibody.

Storage

Store the Gamma Catenin antibody at 2-8oC (with azide) or aliquot and store at -20oC or colder (without azide).