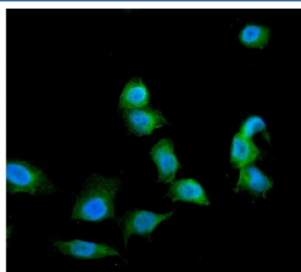


## Galectin Antibody (R30492)

Catalog No.	Formulation	Size
R30492	0.5mg/ml if reconstituted with 0.2ml sterile DI water	100 ug

**Bulk quote request**

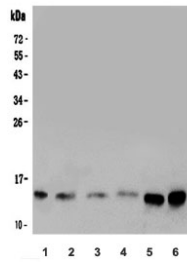
<b>Availability</b>	1-3 business days
<b>Species Reactivity</b>	Human
<b>Format</b>	Antigen affinity purified
<b>Clonality</b>	Polyclonal (rabbit origin)
<b>Isotype</b>	Rabbit IgG
<b>Purity</b>	Antigen affinity
<b>Buffer</b>	Lyophilized from 1X PBS with 2.5% BSA and 0.025% sodium azide/thimerosal
<b>UniProt</b>	P09382
<b>Applications</b>	Western Blot : 0.5-1ug/ml Immunohistochemistry (FFPE) : 1-2ug/ml Immunohistochemistry (frozen) : 1-2ug/ml Immunofluorescence (FFPE) : 2-4ug/ml Flow Cytometry : 1-3ug/million cells
<b>Limitations</b>	This Galectin antibody is available for research use only.



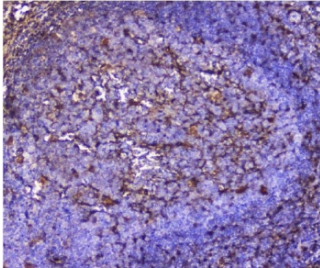
Immunofluorescent staining of FFPE human U-2 OS cells with Galectin antibody (green) and DAPI nuclear stain (blue). HIER: steam section in pH6 citrate buffer for 20 min.



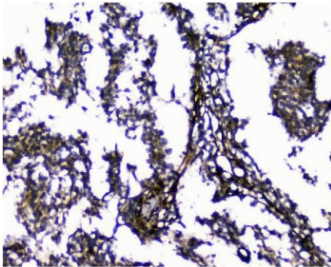
Western blot testing of Galectin antibody and Lane 1: recombinant human protein 10ng; 2: 5ng; 3: 2.5ng.



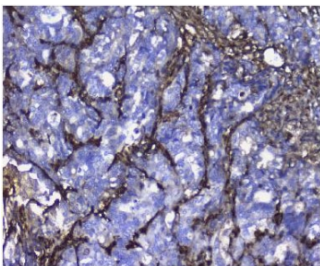
Western blot testing of human 1) HeLa, 2) MCF7, 3) COLO-320, 4) A549, 5) 22RV1 and 6) A375 cell lysate with Galectin antibody. Expected molecular weight ~14 kDa.



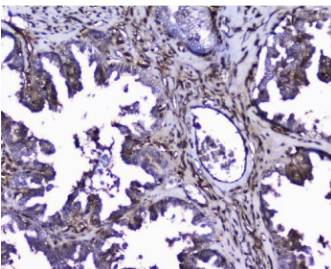
IHC staining of FFPE human tonsil with Galectin antibody. HIER: boil tissue sections in pH8 EDTA for 20 min and allow to cool before testing.



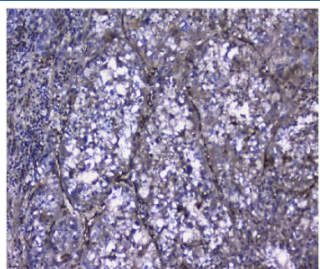
IHC staining of FFPE human glioma with Galectin antibody. HIER: boil tissue sections in pH8 EDTA for 20 min and allow to cool before testing.



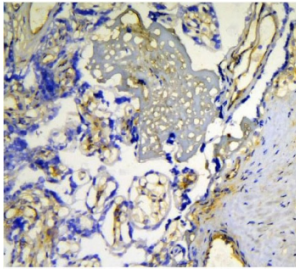
IHC staining of FFPE human stomach cancer with Galectin antibody. HIER: boil tissue sections in pH8 EDTA for 20 min and allow to cool before testing.



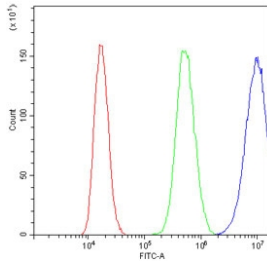
IHC staining of FFPE human ovarian cancer with Galectin antibody. HIER: boil tissue sections in pH8 EDTA for 20 min and allow to cool before testing.



IHC staining of FFPE human liver cancer with Galectin antibody. HIER: boil tissue sections in pH8 EDTA for 20 min and allow to cool before testing.



IHC staining of frozen human placenta with Galectin antibody.



Flow cytometry testing of human PC-3 cells with Galectin antibody at 1ug/million cells (blocked with goat sera); Red=cells alone, Green=isotype control, Blue= Galectin antibody.

## Description

Galectin 1 is a protein that in humans is encoded by the LGALS1 gene. Galectins belong to a family of related beta-galactoside-binding lectins, also referred to as S-type or S-Lac lectins. Its gene is mapped to 22q12-q13. Galectin 1 was expressed in a subset of slowly dividing subventricular zone astrocytes, which included the neural stem cells. It has been considered as an autocrine negative growth factor that regulates cell proliferation.

## Application Notes

The stated application concentrations are suggested starting amounts. Titration of the Galectin antibody may be required due to differences in protocols and secondary/substrate sensitivity.

## Immunogen

An amino acid sequence from the C-terminus of human Galectin (NYMAADGDFKIKCVAFD) was used as the immunogen for this Galectin antibody.

## Storage

After reconstitution, the Galectin antibody can be stored for up to one month at 4°C. For long-term, aliquot and store at -20°C. Avoid repeated freezing and thawing.