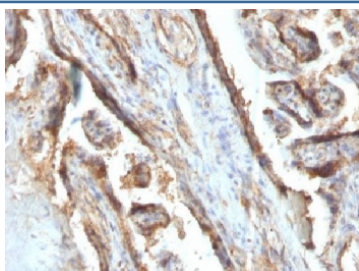


Galectin 13 Antibody / LGALS13 [clone PP13/1161] (V3295)

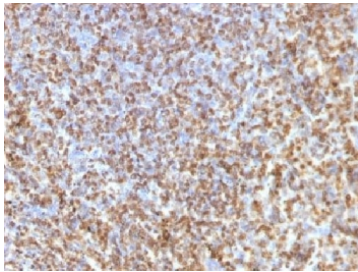
Catalog No.	Formulation	Size
V3295-100UG	0.2 mg/ml in 1X PBS with 0.1 mg/ml BSA (US sourced) and 0.05% sodium azide	100 ug
V3295-20UG	0.2 mg/ml in 1X PBS with 0.1 mg/ml BSA (US sourced) and 0.05% sodium azide	20 ug
V3295SAF-100UG	1 mg/ml in 1X PBS; BSA free, sodium azide free	100 ug

Bulk quote request

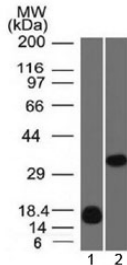
Availability	1-3 business days
Species Reactivity	Human
Format	Purified
Clonality	Monoclonal (mouse origin)
Isotype	Mouse IgG2b, kappa
Clone Name	PP13/1161
Purity	Protein G affinity chromatography
UniProt	Q9UHV8
Localization	Cytoplasmic, cell surface
Applications	Flow Cytometry : 0.5-1ug/million cells Immunofluorescence : 0.5-1ug/ml Western Blot : 0.5-1ug/ml Immunohistochemistry (FFPE) : 0.5-1ug/ml for 30 min at RT
Limitations	This Galectin 13 antibody is available for research use only.



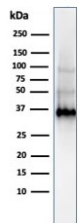
IHC testing of FFPE human placenta with Galectin 13 antibody (clone PP13/1161). Required HIER: boil tissue sections in 10mM Tris with 1mM EDTA, pH 9 or 10mM Citrate buffer, pH 6, for 10-20.



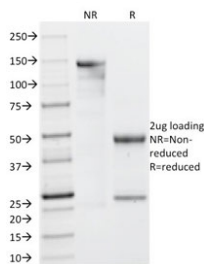
IHC testing of FFPE human spleen with Galectin 13 antibody (clone PP13/1161). Required HIER: boil tissue sections in 10mM Tris with 1mM EDTA, pH 9 or 10mM Citrate buffer, pH 6, for 10-20.



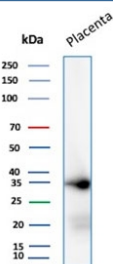
Western blot testing of 1) human partial recombinant protein and 2) human K562 cell lysate with Galectin 13 antibody (clone PP13/1161). Expected molecular weight ~16 kDa (monomer) and ~32 kDa (dimer).



Western blot testing of human K562 cell lysate with Galectin 13 antibody (clone PP13/1161). Expected molecular weight ~16 kDa (monomer) and ~32 kDa (dimer).



SDS-PAGE analysis of purified, BSA-free Galectin 13 antibody (clone PP13/1161) as confirmation of integrity and purity.



Western blot testing of human placental tissue lysate with Galectin 13 antibody (clone PP13/1161). Expected molecular weight ~16 kDa (monomer) and ~32 kDa (dimer).

Description

It recognizes a 32kDa protein, which is identified as homodimer of LGALS13/Galectin 13 (also known as PP13). Galectins are a family of soluble β^2 -galactoside-binding lectins that modulate cell-to-cell adhesion and cell-to-extracellular matrix (ECM) interactions and play a role in tumor progression, pre-mRNA splicing and apoptosis. One such member, Galectin 13, is a 139 amino acid protein that contains one galectin domain. Possessing lysophospholipase activity, Galectin-13 exists as a disulfide-linked homodimer. Galectin 13 is suggested to have a developmental role in the placenta and may display immunobiological activity in fetomaternal blood-spaces. Screening for Galectin 13 in maternal serum during the first trimester of pregnancy may serve as a diagnostic marker to predict preterm pre-eclampsia.

Application Notes

Titration of the Galectin 13 antibody may be required for optimal performance.

Immunogen

A human partial recombinant protein corresponding to amino acids 23-134 was used as the immunogen for the Galectin 13 antibody.

Storage

Store the Galectin 13 antibody at 2-8°C (with azide) or aliquot and store at -20°C or colder (without azide).