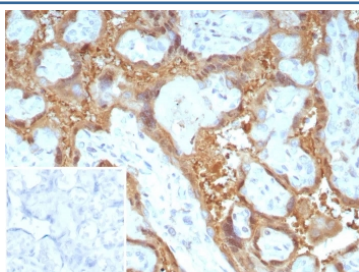


## Galectin 13 Antibody / LGALS13 / GAL13 [clone PP13/8897] (V5623)

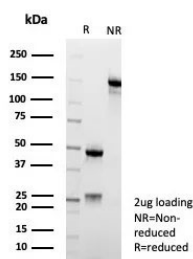
Catalog No.	Formulation	Size
V5623-100UG	0.2 mg/ml in 1X PBS with 0.1 mg/ml BSA (US sourced), 0.05% sodium azide	100 ug
V5623-20UG	0.2 mg/ml in 1X PBS with 0.1 mg/ml BSA (US sourced), 0.05% sodium azide	20 ug
V5623SAF-100UG	1 mg/ml in 1X PBS; BSA free, sodium azide free	100 ug

[Bulk quote request](#)

<b>Availability</b>	1-3 business days
<b>Species Reactivity</b>	Human
<b>Format</b>	Purified
<b>Clonality</b>	Monoclonal (mouse origin)
<b>Isotype</b>	Mouse IgG2b, kappa
<b>Clone Name</b>	PP13/8897
<b>Purity</b>	Protein A/G affinity
<b>UniProt</b>	Q9UHV8
<b>Localization</b>	Cytoplasm, Cell membrane
<b>Applications</b>	Immunohistochemistry (FFPE) : 1-2ug/ml
<b>Limitations</b>	This Galectin 13 antibody is available for research use only.



IHC staining of FFPE human placental tissue with Galectin-13 antibody (clone PP13/8897). Inset: PBS used in place of primary Ab (secondary Ab negative control).  
 HIER: boil tissue sections in pH 9 10mM Tris with 1mM EDTA for 20 min and allow to cool before testing.



SDS-PAGE analysis of purified, BSA-free Galectin-13 antibody (clone PP13/8897) as confirmation of purity and integrity of antibody.

## Description

It recognizes a 32kDa protein, which is identified as homodimer of galectin-13 (also known as PP13). Galectins are a family of soluble beta-galactoside-binding lectins that modulate cell-to-cell adhesion and cell-to-extracellular matrix (ECM) interactions and play a role in tumor progression, pre-mRNA splicing and apoptosis. One such member, galectin-13, is a 139 amino acid protein that contains one galectin domain. Possessing lysophospholipase activity, galectin-13 exists as a disulfide-linked homodimer. Galectin-13 is suggested to have a developmental role in the placenta and may display immunobiological activity in feto-maternal blood-spaces. Screening for galectin-13 in maternal serum during the first trimester of pregnancy may serve as a diagnostic marker to predict preterm pre-eclampsia.

## Application Notes

Optimal dilution of the Galectin 13 antibody should be determined by the researcher.

## Immunogen

A recombinant human Galectin-13 protein fragment (amino acids 1-139) was used as the immunogen for the Galectin 13 antibody.

## Storage

Aliquot the Galectin 13 antibody and store frozen at -20oC or colder. Avoid repeated freeze-thaw cycles.