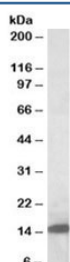


Galectin 1 Antibody (R34524)

Catalog No.	Formulation	Size
R34524-100UG	0.5 mg/ml in 1X TBS, pH7.3, with 0.5% BSA (US sourced) and 0.02% sodium azide	100 ug

[Bulk quote request](#)

Availability	1-3 business days
Species Reactivity	Human, Mouse, Rat
Predicted Reactivity	Cow
Format	Antigen affinity purified
Clonality	Polyclonal (goat origin)
Isotype	Goat Ig
Purity	Antigen affinity
Gene ID	3956
Applications	Western Blot : 0.5-2ug/ml ELISA (peptide) LOD : 1:32000
Limitations	This Galectin 1 antibody is available for research use only.



Western blot testing of rat pancreas lysate with Galectin 1 antibody at 0.5ug/ml.
Predicted/observed molecular weight: ~15kDa.

Description

Additional name(s) for this target protein: Lectin, galactose binding, soluble 1; Lgals1

Application Notes

Optimal dilution of the Galectin 1 antibody should be determined by the researcher.

Immunogen

Amino acids KLPDGHEFKFPNR were used as the immunogen for this Galectin 1 antibody.

Storage

Aliquot and store the Galectin 1 antibody at -20oC.