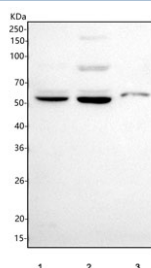


GABA Transporter 1 Antibody / GAT-1 / SLC6A1 (RQ8735)

Catalog No.	Formulation	Size
RQ8735	0.5mg/ml if reconstituted with 0.2ml sterile DI water	100 ug

Bulk quote request

Availability	1-3 days
Species Reactivity	Human, Mouse, Rat
Format	Antigen affinity purified
Clonality	Polyclonal (rabbit origin)
Isotype	Rabbit IgG
Purity	Antigen affinity chromatography
Buffer	Lyophilized from 1X PBS with 2% Trehalose
UniProt	P30531
Applications	Western Blot : 1-2ug/ml ELISA : 0.1-0.5ug/ml
Limitations	This GABA Transporter 1 antibody is available for research use only.



Western blot testing of 1) human HeLa, 2) rat C6 and 3) mouse Neuro-2a cell lysate with GABA Transporter 1 antibody. Predicted molecular weight: 67~80 kDa depending on level of glycosylation.

Description

GABA transporter 1 (GAT1), also known as sodium- and chloride-dependent GABA transporter 1, is a protein that in humans is encoded by the SLC6A1 gene. GABA Transporter 1 uses Na⁺ and Cl⁻ to create a gradient, which removes or adds GABA to extracellular spaces in the cerebrum and cerebellum. The stoichiometry for GABA Transporter 1 is 2 Na⁺: 1 Cl⁻: 1 GABA. The activity of GAT1 is largely dependent on the presence of Na⁺, while Cl⁻ assists by increasing the ability for GAT-1 to uptake GABA.

Application Notes

Optimal dilution of the GABA Transporter 1 antibody should be determined by the researcher.

Immunogen

An E.coli-derived human recombinant protein (amino acids A23-A215) was used as the immunogen for the GABA Transporter 1 antibody.

Storage

After reconstitution, the GABA Transporter 1 antibody can be stored for up to one month at 4°C. For long-term, aliquot and store at -20°C. Avoid repeated freezing and thawing.