

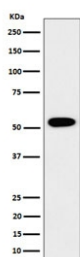
## G-rich sequence factor 1 Antibody / GRSF1 [clone 28G51] (RQ8399)

Catalog No.	Formulation	Size
RQ8399	Antibody in PBS with 0.02% sodium azide, 50% glycerol and 0.4-0.5mg/ml BSA	100 ul

Recombinant RABBIT MONOCLONAL

[Bulk quote request](#)

Availability	1-3 business days
Species Reactivity	Human
Format	Purified
Clonality	Recombinant Rabbit Monoclonal
Isotype	Rabbit IgG
Clone Name	28G51
Purity	Affinity chromatography
UniProt	Q12849
Applications	Western Blot : 1:500-1:2000
Limitations	This G-rich sequence factor 1 antibody is available for research use only.



Western blot testing of human HEK293 cell lysate with G-rich sequence factor 1 antibody. Predicted molecular weight ~53 kDa.

### Description

Regulator of post-transcriptional mitochondrial gene expression, required for assembly of the mitochondrial ribosome and for recruitment of mRNA and lncRNA. Binds RNAs containing the 14 base G-rich element. Preferentially binds RNAs transcribed from three contiguous genes on the light strand of mtDNA, the ND6 mRNA, and the long non-coding RNAs for MT-CYB and MT-ND5, each of which contains multiple consensus binding sequences. [UniProt]

### Application Notes

Optimal dilution of the G-rich sequence factor 1 antibody should be determined by the researcher.

## **Immunogen**

A synthetic peptide derived from human GRSF1 protein was used as the immunogen for the G-rich sequence factor 1 antibody.

## **Storage**

Store the G-rich sequence factor 1 antibody at -20oC.