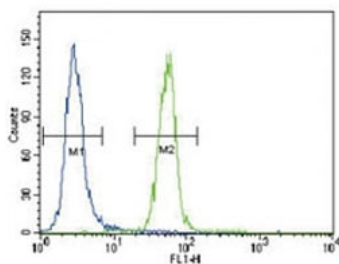


FYN Antibody / Tyrosine-protein kinase Fyn (F50706)

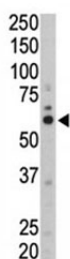
Catalog No.	Formulation	Size
F50706-0.4ML	In 1X PBS, pH 7.4, with 0.09% sodium azide	0.4 ml
F50706-0.08ML	In 1X PBS, pH 7.4, with 0.09% sodium azide	0.08 ml

Bulk quote request

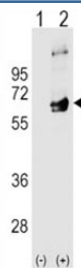
Availability	1-3 business days
Species Reactivity	Human, Mouse
Predicted Reactivity	Rat, Bovine, Chicken
Format	Antigen affinity purified
Clonality	Polyclonal (rabbit origin)
Isotype	Rabbit Ig
Purity	Antigen affinity
UniProt	P06241
Applications	Western Blot : 1:1000 Flow Cytometry : 1:10-1:50 IHC (Paraffin) : 1:50-1:100
Limitations	This FYN antibody is available for research use only.



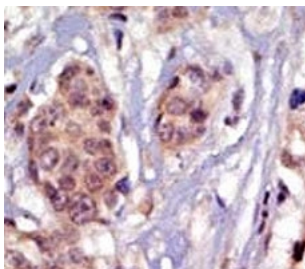
FYN antibody flow cytometric analysis of HeLa cells (right histogram) compared to a [negative control](http://search_result.php?search_txt=n1001) (left histogram). FITC-conjugated goat-anti-rabbit secondary Ab was used for the analysis.



Western blot analysis of FYN antibody and mouse liver tissue lysate. Predicted molecular weight: ~59 kDa.



Western blot analysis of FYN antibody and 293 cell lysate (2 ug/lane) either nontransfected (Lane 1) or transiently transfected (2) with the FYN gene.



IHC analysis of FFPE human breast carcinoma tissue stained with the FYN antibody

Description

FYN is a non-receptor tyrosine-protein kinase that plays a role in many biological processes including regulation of cell growth and survival, cell adhesion, integrin-mediated signaling, cytoskeletal remodeling, cell motility, immune response and axon guidance.

Application Notes

Titration of the FYN antibody may be required due to differences in protocols and secondary/substrate sensitivity.

Immunogen

A portion of amino acids 13-43 from the human protein was used as the immunogen for this FYN antibody.

Storage

Aliquot the FYN antibody and store frozen at -20°C or colder. Avoid repeated freeze-thaw cycles.