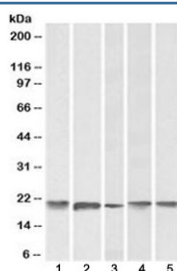


FTL Antibody / Ferritin light chain (R34085)

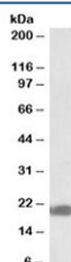
Catalog No.	Formulation	Size
R34085-100UG	0.5 mg/ml in 1X TBS, pH7.3, with 0.5% BSA (US sourced) and 0.02% sodium azide	100 ug

[Bulk quote request](#)

Availability	1-3 business days
Species Reactivity	Human, Mouse, Rat
Predicted Reactivity	Cow, Dog
Format	Antigen affinity purified
Clonality	Polyclonal (goat origin)
Isotype	Goat Ig
Purity	Antigen affinity
Gene ID	2512
Applications	Western Blot : 0.03-0.1ug/ml ELISA (peptide) LOD : 1:8000
Limitations	This FTL antibody is available for research use only.



Western blot testing of human 1) cerebellum, 2) liver, 3) placenta, 4) mouse brain and 5) rat brain lysate with FTL antibody at 0.1ug/ml. Predicted molecular weight: ~20 kDa.



Western blot testing of human placenta lysate with FTL antibody at 0.05ug/ml. Predicted molecular weight: ~20 kDa.

Description

Additional name(s) for this target protein: Ferritin L, Ferritin light chain

Application Notes

Optimal dilution of the FTL antibody should be determined by the researcher.

Immunogen

Amino acids GEYLFERLTLKHD were used as the immunogen for this FTL antibody.

Storage

Aliquot and store the FTL antibody at -20oC.