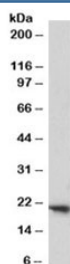


FTH1 Antibody (R33503)

Catalog No.	Formulation	Size
R33503-100UG	0.5 mg/ml in 1X TBS, pH7.3, with 0.5% BSA (US sourced) and 0.02% sodium azide	100 ug

Bulk quote request

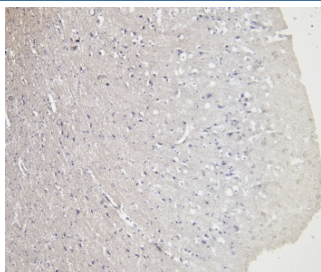
Availability	1-3 business days
Species Reactivity	Human
Format	Antigen affinity purified
Clonality	Polyclonal (goat origin)
Isotype	Goat Ig
Purity	Antigen affinity
Gene ID	2495
Applications	Western Blot : 0.3-1ug/ml Immunohistochemistry (FFPE) : 5ug/ml ELISA (peptide) LOD : 1:2000
Limitations	This FTH1 antibody is available for research use only.



Western blot testing of human placenta lysate with FTH1 antibody at 1ug/ml. Predicted molecular weight: ~21 kDa.



IHC staining of FFPE human cerebral cortex tissue with FTH1 antibody at 5ug/ml. Required HIER: steamed antigen retrieval with pH6 citrate buffer; HRP-staining.



Negative control: IHC staining of FFPE human cerebral cortex tissue without primary antibody. HIER: steamed with pH6 citrate buffer, HRP-staining.

Description

Additional name(s) for this target protein: Ferritin, heavy polypeptide 1

Application Notes

Optimal dilution of the FTH1 antibody should be determined by the researcher.

Immunogen

Amino acids DKHTLGSDNES were used as the immunogen for this FTH1 antibody.

Storage

Aliquot and store the FTH1 antibody at -20oC.