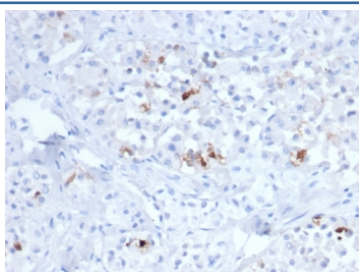


FSH beta Antibody [clone FSHB/6845] (V4144)

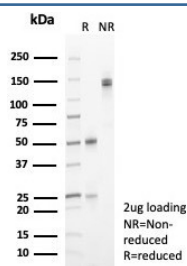
Catalog No.	Formulation	Size
V4144-100UG	0.2 mg/ml in 1X PBS with 0.1 mg/ml BSA (US sourced), 0.05% sodium azide	100 ug
V4144-20UG	0.2 mg/ml in 1X PBS with 0.1 mg/ml BSA (US sourced), 0.05% sodium azide	20 ug
V4144SAF-100UG	1 mg/ml in 1X PBS; BSA free, sodium azide free	100 ug

[Bulk quote request](#)

Availability	1-3 business days
Species Reactivity	Human
Format	Purified
Clonality	Monoclonal (mouse origin)
Isotype	Mouse IgG3, kappa
Clone Name	FSHB/6845
Purity	Protein A/G affinity
UniProt	P01225
Localization	Cytoplasm, Secreted
Applications	Immunohistochemistry (FFPE) : 1-2ug/ml for 30 minutes at RT
Limitations	This FSH beta antibody is available for research use only.



IHC staining of FFPE human pituitary tissue with FSH beta antibody (clone FSHB/6845).
 HIER: boil tissue sections in pH 9 10mM Tris with 1mM EDTA for 20 min and allow to cool before testing.



SDS-PAGE analysis of purified, BSA-free FSH beta antibody (clone FSHB/6845) as confirmation of integrity and purity.

Description

Follicle stimulating hormone (FSH) is a hormone synthesized and secreted by gonadotrophs in the anterior pituitary gland. In the ovary, FSH stimulates the growth of immature Graafian follicles to maturation. As the follicle grows, it releases inhibin, which deactivates the FSH production. In men, FSH enhances the production of androgen-binding protein by the Sertoli cells of the testis and is critical for spermatogenesis. FSH and LH act synergistically in reproduction. FSH is a useful marker in the classification of pituitary tumors and the study of pituitary disease.

Application Notes

Optimal dilution of the FSH beta antibody should be determined by the researcher.

Immunogen

A recombinant partial protein (within amino acids 1-100) from the human protein was used as the immunogen for the FSH beta antibody.

Storage

Aliquot the FSH beta antibody and store frozen at -20oC or colder. Avoid repeated freeze-thaw cycles.