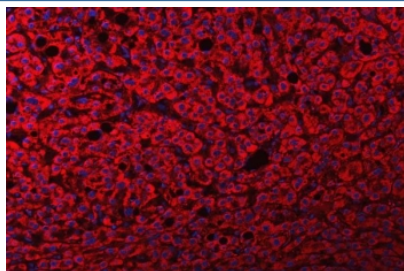


FRY Antibody / Protein furry homolog (RQ7510)

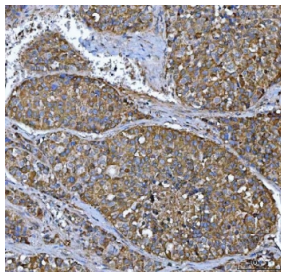
Catalog No.	Formulation	Size
RQ7510	0.5mg/ml if reconstituted with 0.2ml sterile DI water	100 ug

Bulk quote request

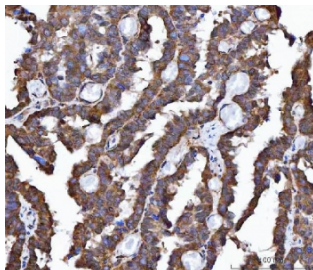
Availability	1-3 business days
Species Reactivity	Human, Mouse, Rat
Format	Antigen affinity purified
Clonality	Polyclonal (rabbit origin)
Isotype	Rabbit IgG
Purity	Antigen affinity purified
Buffer	Lyophilized from 1X PBS with 2% Trehalose
UniProt	Q5TBA9
Localization	Cytoplasmic
Applications	Western Blot : 0.5-1ug/ml Immunohistochemistry (FFPE) : 2-5ug/ml Flow Cytometry : 1-3ug/million cells Immunofluorescence : 5ug/ml Direct ELISA : 0.1-0.5ug/ml
Limitations	This FRY antibody is available for research use only.



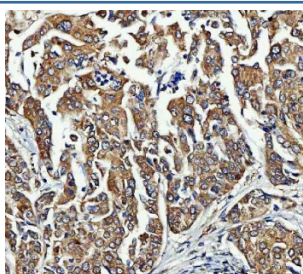
Immunofluorescent staining of FFPE human liver cancer tissue with FRY antibody (red) and DAPI nuclear stain (blue). HIER: steam section in pH8 EDTA buffer for 20 min.



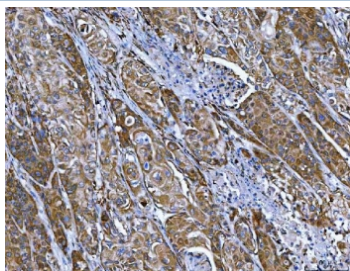
IHC staining of FFPE human liver cancer tissue with FRY antibody. HIER: boil tissue sections in pH8 EDTA for 20 min and allow to cool before testing.



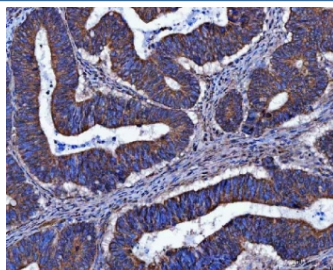
IHC staining of FFPE human ovarian cancer tissue with FRY antibody. HIER: boil tissue sections in pH8 EDTA for 20 min and allow to cool before testing.



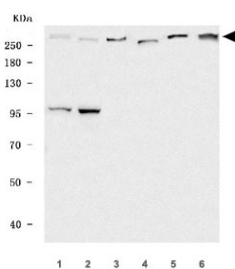
IHC staining of FFPE human lung cancer tissue with FRY antibody. HIER: boil tissue sections in pH8 EDTA for 20 min and allow to cool before testing.



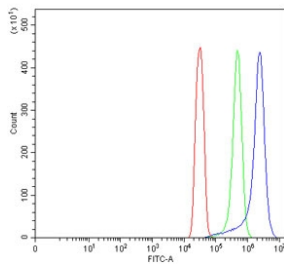
IHC staining of FFPE human penis squamous cell carcinoma tissue with FRY antibody. HIER: boil tissue sections in pH8 EDTA for 20 min and allow to cool before testing.



IHC staining of FFPE human colorectal adenocarcinoma tissue with FRY antibody. HIER: boil tissue sections in pH8 EDTA for 20 min and allow to cool before testing.



Western blot testing of 1) human RT4, 2) human Caco-2, 3) rat brain, 4) rat lung, 5) mouse brain and 6) mouse lung tissue lysate with FRY antibody. Predicted molecular weight ~339 kDa.



Flow cytometry testing of human SiHa cells with FRY antibody at 1ug/million cells (blocked with goat sera); Red=cells alone, Green=isotype control, Blue= FRY antibody.

Description

Predicted to enable enzyme inhibitor activity. Predicted to be involved in cell morphogenesis and neuron projection development. Predicted to be located in microtubule organizing center and spindle pole. Predicted to be active in cell cortex and site of polarized growth.

Application Notes

Optimal dilution of the FRY antibody should be determined by the researcher.

Immunogen

E. coli-derived recombinant human protein (amino acids E11-L3013) was used as the immunogen for the FRY antibody.

Storage

After reconstitution, the FRY antibody can be stored for up to one month at 4oC. For long-term, aliquot and store at -20oC. Avoid repeated freezing and thawing.