

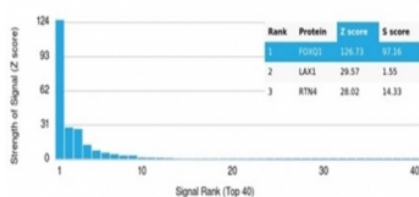
FOXQ1 Antibody [clone PCRPF-FOXQ1-2D2] (V9747)

Catalog No.	Formulation	Size
V9747-100UG	0.2 mg/ml in 1X PBS with 0.1 mg/ml BSA (US sourced), 0.05% sodium azide	100 ug
V9747-20UG	0.2 mg/ml in 1X PBS with 0.1 mg/ml BSA (US sourced), 0.05% sodium azide	20 ug
V9747SAF-100UG	1 mg/ml in 1X PBS; BSA free, sodium azide free	100 ug

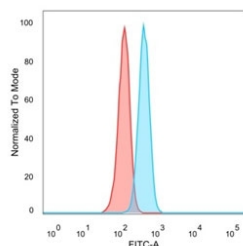
[Bulk quote request](#)

Availability	1-3 business days
Species Reactivity	Human
Format	Purified
Clonality	Monoclonal (mouse origin)
Isotype	Mouse IgG1
Clone Name	PCRPF-FOXQ1-2D2
Purity	Protein A/G affinity
UniProt	Q9C009
Localization	Nucleus
Applications	ELISA (order BSA-free Format For Coating) : Flow Cytometry : 1-2ug/million cells Western Blot : 1-2ug/ml
Limitations	This FOXQ1 antibody is available for research use only.

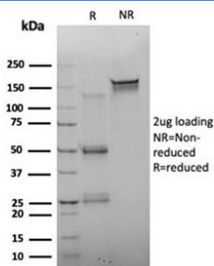
Human Protein Microarray Specificity Validation



Analysis of HuProt(TM) microarray containing more than 19,000 full-length human proteins using FOXQ1 antibody (clone PCRPF-FOXQ1-2D2). These results demonstrate the foremost specificity of the PCRPF-FOXQ1-2D2 mAb. Z- and S- score: The Z-score represents the strength of a signal that an antibody (in combination with a fluorescently-tagged anti-IgG secondary Ab) produces when binding to a particular protein on the HuProt(TM) array. Z-scores are described in units of standard deviations (SD's) above the mean value of all signals generated on that array. If the targets on the HuProt(TM) are arranged in descending order of the Z-score, the S-score is the difference (also in units of SD's) between the Z-scores. The S-score therefore represents the relative target specificity of an Ab to its intended target.



FACS staining of PFA-fixed human HeLa cells with FOXQ1 antibody (blue, clone PCRP-FOXQ1-2D2), and unstained cells (red).



SDS-PAGE analysis of purified, BSA-free FOXQ1 antibody (clone PCRP-FOXQ1-2D2) as confirmation of integrity and purity.

Description

DNA replication is initiated by the binding of initiation factors to the origin of replication. Nucleosomes inhibit access to the replication machinery at these origin sequences. Nucleosome remodeling factors increase the accessibility of nucleosomal DNA to transcriptional regulators. CHRAC15 and CHRAC17 are subunits of the nucleosomal remodeling factor CHRAC (chromatin accessibility complex), which increases the accessibility of nucleosomal DNA in an ATP-dependent manner. Unlike other known chromatin remodeling factors, CHRAC also functions during chromatin assembly by using ATP to convert irregular chromatin into a regular array of nucleosomes with even spacing. This conversion process occurs when CHRAC organizes randomly deposited histones into a regularly spaced array. In the presence of CHRAC, the nucleosomal ATPase ISWI catalyzes several ATP-dependent transitions of chromatin structure.

Application Notes

Optimal dilution of the FOXQ1 antibody should be determined by the researcher.

Immunogen

Recombinant full-length human FOXQ1 protein was used as the immunogen for the FOXQ1 antibody.

Storage

Aliquot the FOXQ1 antibody and store frozen at -20oC or colder. Avoid repeated freeze-thaw cycles.