

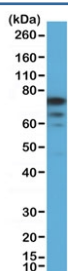
FOXP1 Antibody [clone RM402] (R20418)

Catalog No.	Formulation	Size
R20418-0.1ML	Antibody in PBS with 50% glycerol, 1% BSA and 0.09% sodium azide	100 ul

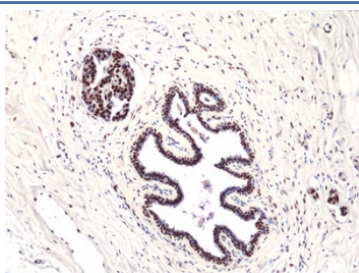
Recombinant **RABBIT MONOCLONAL**

[Bulk quote request](#)

Availability	1-3 business days
Species Reactivity	Human
Format	Purified
Clonality	Recombinant Rabbit Monoclonal
Isotype	Rabbit IgG
Clone Name	RM402
Purity	Protein A purified from animal origin-free supernatant
UniProt	Q9H334
Localization	Nuclear
Applications	Immunohistochemistry (FFPE) : 1:100-1:200 Western Blot : 1:1000-1:2000
Limitations	This recombinant FOXP1 antibody is available for research use only.



Western blot testing of human HEK293 cell lysate with recombinant FOXP1 antibody at 1:1000 dilution. Expected molecular weight: 65-77 kDa (multiple isoforms).



IHC staining of FFPE human breast ductal carcinoma tissue with recombinant FOXP1 antibody at 1:200.

Description

This antibody reacts to human to Foxp1 / Forkhead box protein P1.

Application Notes

The stated application concentrations are suggested starting points. Titration of the recombinant FOXP1 antibody may be required due to differences in protocols and secondary/substrate sensitivity.

Immunogen

A peptide corresponding to residues near the C-terminus of human Foxp1 was used as the immunogen for the recombinant FOXP1 antibody.

Storage

Store the recombinant FOXP1 antibody at -20oC.