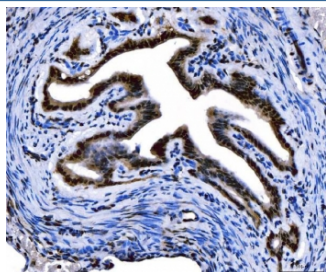


FOXL2 Antibody (RQ6867)

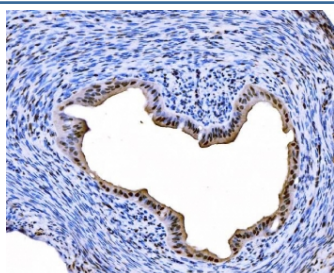
Catalog No.	Formulation	Size
RQ6867	0.5mg/ml if reconstituted with 0.2ml sterile DI water	100 ug

Bulk quote request

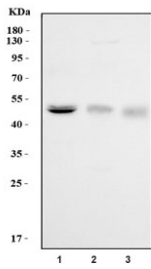
Availability	1-3 business days
Species Reactivity	Human, Mouse, Rat
Format	Antigen affinity purified
Clonality	Polyclonal (rabbit origin)
Isotype	Rabbit IgG
Purity	Antigen affinity purified
Buffer	Lyophilized from 1X PBS with 2% Trehalose
UniProt	P58012
Localization	Nuclear
Applications	Western Blot : 1-2ug/ml Immunohistochemistry (FFPE) : 2-5ug/ml Flow Cytometry : 1-3ug/million cells
Limitations	This FOXL2 antibody is available for research use only.



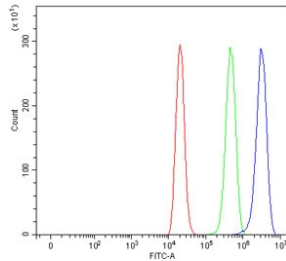
IHC staining of FFPE mouse ovary tissue with FOXL2 antibody. HIER: boil tissue sections in pH8 EDTA for 20 min and allow to cool before testing.



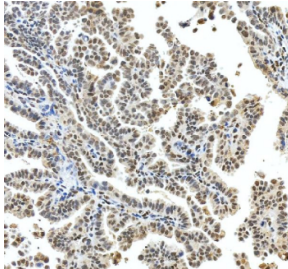
IHC staining of FFPE rat ovary tissue with FOXL2 antibody. HIER: boil tissue sections in pH8 EDTA for 20 min and allow to cool before testing.



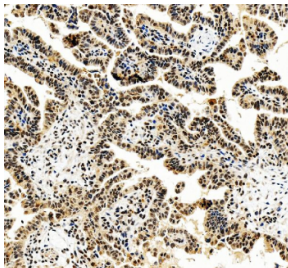
Western blot testing of 1) human Jurkat, 2) rat ovary and 3) mouse ovary tissue lysate with FOXL2 antibody. Predicted molecular weight ~38 kDa, but can be observed at 45-50 kDa.



Flow cytometry testing of fixed and permeabilized human ThP-1 cells with FOXL2 antibody at 1ug/million cells (blocked with goat sera); Red=cells alone, Green=isotype control, Blue= FOXL2 antibody.



IHC staining of FFPE human ovarian cancer tissue with FOXL2 antibody, HRP-secondary and DAB substrate. HIER: boil tissue sections in pH8 EDTA for 20 min and allow to cool before testing.



IHC staining of FFPE human lung cancer tissue with FOXL2 antibody, HRP-secondary and DAB substrate. HIER: boil tissue sections in pH8 EDTA for 20 min and allow to cool before testing.