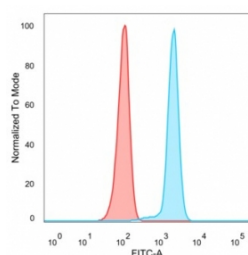


FOXL2 Antibody / Forkhead box protein L2 [clone PCRP-FOXL2-1B4] (V5004)

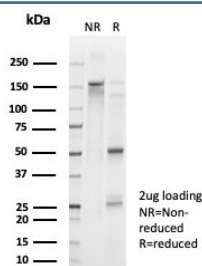
Catalog No.	Formulation	Size
V5004-100UG	0.2 mg/ml in 1X PBS with 0.1 mg/ml BSA (US sourced), 0.05% sodium azide	100 ug
V5004-20UG	0.2 mg/ml in 1X PBS with 0.1 mg/ml BSA (US sourced), 0.05% sodium azide	20 ug
V5004SAF-100UG	1 mg/ml in 1X PBS; BSA free, sodium azide free	100 ug

[Bulk quote request](#)

Availability	1-3 business days
Species Reactivity	Human
Format	Purified
Clonality	Monoclonal (mouse origin)
Isotype	Mouse IgG2c
Clone Name	PCRP-FOXL2-1B4
Purity	Protein A/G affinity
UniProt	P58012
Localization	Nucleus
Applications	ELISA (Order BSA-free Format For Coating) : Flow Cytometry : 1-2ug/million cells
Limitations	This FOXL2 antibody is available for research use only.



Flow cytometry testing of PFA-fixed human HeLa cells with FOXL2 antibody (clone PCRP-FOXL2-1B4) followed by goat anti-mouse IgG-CF488 (blue), Red = unstained cells.



SDS-PAGE analysis of purified, BSA-free FOXL2 antibody (clone PCRP-FOXL2-1B4) as confirmation of integrity and purity.



Analysis of a HuProt(TM) microarray containing more than 19,000 full-length human proteins using FOXL2 antibody (clone PCRP-FOXL2-1B4). Z- and S- Score: The Z-score represents the strength of a signal that a monoclonal antibody (in combination with a fluorescently-tagged anti-IgG secondary antibody) produces when binding to a particular protein on the HuProt(TM) array. Z-scores are described in units of standard deviations (SD's) above the mean value of all signals generated on that array. If targets on HuProt(TM) are arranged in descending order of the Z-score, the S-score is the difference (also in units of SD's) between the Z-score. S-score therefore represents the relative target specificity of a mAb to its intended target. A mAb is considered to specific to its intended target, if the mAb has an S-score of at least 2.5. For example, if a mAb binds to protein X with a Z-score of 43 and to protein Y with a Z-score of 14, then the S-score for the binding of that mAb to protein X is equal to 29.

Description

FOXL2 is a critical factor essential for ovary differentiation and maintenance, and repression of the genetic program for somatic testis determination. It prevents trans-differentiation of ovary to testis through transcriptional repression of the sertoli cell-promoting gene SOX9. FOXL2 is mainly expressed in ovary, parathyroid gland and sex cord-stromal tumors. FOXL2 is generally used for diagnosis of sex cord-stromal tumors with Inhibin, Calretinin and SF-1.

Application Notes

Optimal dilution of the FOXL2 antibody should be determined by the researcher.

Immunogen

The protein domain of FOXL2 protein was used as the immunogen for the FOXL2 antibody.

Storage

Aliquot the FOXL2 antibody and store frozen at -20oC or colder. Avoid repeated freeze-thaw cycles.