

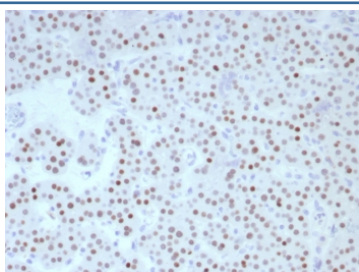
## FOXL2 Antibody / Forkhead box protein L2 [clone FOXL2/8701R] (V5007)

Catalog No.	Formulation	Size
V5007-100UG	0.2 mg/ml in 1X PBS with 0.1 mg/ml BSA (US sourced), 0.05% sodium azide	100 ug
V5007-20UG	0.2 mg/ml in 1X PBS with 0.1 mg/ml BSA (US sourced), 0.05% sodium azide	20 ug
V5007SAF-100UG	1 mg/ml in 1X PBS; BSA free, sodium azide free	100 ug

Recombinant **RABBIT MONOCLONAL**

[Bulk quote request](#)

<b>Availability</b>	1-3 business days
<b>Species Reactivity</b>	Human
<b>Format</b>	Purified
<b>Clonality</b>	Recombinant Rabbit Monoclonal
<b>Isotype</b>	Rabbit IgG, kappa
<b>Clone Name</b>	FOXL2/8701R
<b>Purity</b>	Protein A/G affinity
<b>UniProt</b>	P58012
<b>Localization</b>	Nucleus
<b>Applications</b>	Immunohistochemistry (FFPE) : 1-2ug/ml for 30 min at RT
<b>Limitations</b>	This FOXL2 antibody is available for research use only.



IHC staining of FFPE human parathyroid tissue with FOXL2 antibody (clone FOXL2/8701R). HIER: boil tissue sections in pH 9 10mM Tris with 1mM EDTA for 20 min and allow to cool before testing.

### Description

FOXL2 is a critical factor essential for ovary differentiation and maintenance, and repression of the genetic program for somatic testis determination. It prevents trans-differentiation of ovary to testis through transcriptional repression of the sertoli cell-promoting gene SOX9. FOXL2 is mainly expressed in ovary, parathyroid gland and sex cord-stromal tumors. FOXL2 is generally used for diagnosis of sex cord-stromal tumors with Inhibin, Calretinin and SF-1.

## **Application Notes**

Optimal dilution of the FOXL2 antibody should be determined by the researcher.

## **Immunogen**

Recombinant full-length human FOXL2 protein was used as the immunogen for the FOXL2 antibody.

## **Storage**

Aliquot the FOXL2 antibody and store frozen at -20oC or colder. Avoid repeated freeze-thaw cycles.