

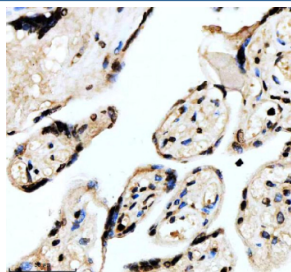
FOXF1 Antibody / Forkhead box F1 [clone 24F27] (RQ8905)

Catalog No.	Formulation	Size
RQ8905	Antibody in PBS with 0.02% sodium azide, 50% glycerol and 0.4-0.5mg/ml BSA	100 ul

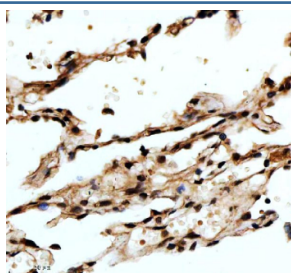
Recombinant **RABBIT MONOCLONAL**

[Bulk quote request](#)

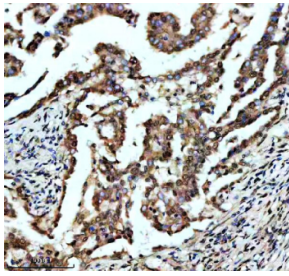
Availability	1-3 days
Species Reactivity	Human
Format	Purified
Clonality	Recombinant Rabbit Monoclonal
Isotype	Rabbit IgG
Clone Name	24F27
Purity	Affinity chromatography
UniProt	Q12946
Localization	Nuclear
Applications	Western Blot : 1:1000 Immunohistochemistry (FFPE) : 1:50
Limitations	This FOXF1 antibody is available for research use only.



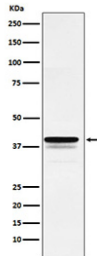
IHC staining of FFPE human placental tissue with FOXF1 antibody, HRP-secondary and DAB substrate. HIER: boil tissue sections in pH8 EDTA for 20 min and allow to cool before testing.



IHC staining of FFPE human lung tissue with FOXF1 antibody, HRP-secondary and DAB substrate. HIER: boil tissue sections in pH8 EDTA for 20 min and allow to cool before testing.



IHC staining of FFPE human lung cancer tissue with FOXF1 antibody, HRP-secondary and DAB substrate. HIER: boil tissue sections in pH8 EDTA for 20 min and allow to cool before testing.



Western blot testing of human HeLa cell lysate with FOXF1 antibody. Predicted molecular weight ~40 kDa.