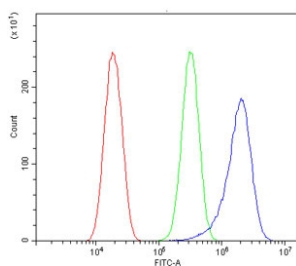


FLNB Antibody / Migfilin-1 / Filamin B (RQ6698)

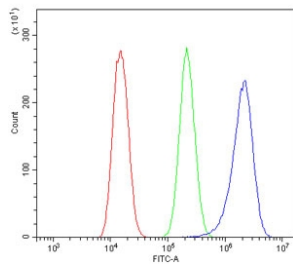
Catalog No.	Formulation	Size
RQ6698	0.5mg/ml if reconstituted with 0.2ml sterile DI water	100 ug

Bulk quote request

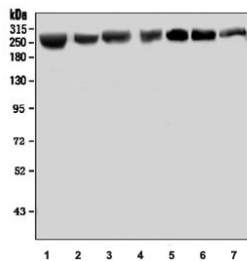
Availability	1-3 business days
Species Reactivity	Human, Mouse, Rat
Format	Antigen affinity purified
Clonality	Polyclonal (rabbit origin)
Isotype	Rabbit IgG
Purity	Antigen affinity purified
Buffer	Lyophilized from 1X PBS with 2% Trehalose
UniProt	O75369
Localization	Cytoplasmic
Applications	Western Blot : 1-2ug/ml Immunohistochemistry (FFPE) : 2-5ug/ml Immunofluorescence (FFPE) : 5ug/ml Flow Cytometry : 1-3ug/million cells Direct ELISA : 0.1-0.5ug/ml
Limitations	This FLNB antibody is available for research use only.



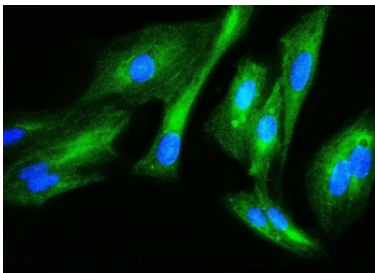
Flow cytometry testing of human HeLa cells with FLNB antibody at 1ug/million cells (blocked with goat sera); Red=cells alone, Green=isotype control, Blue= FLNB antibody.



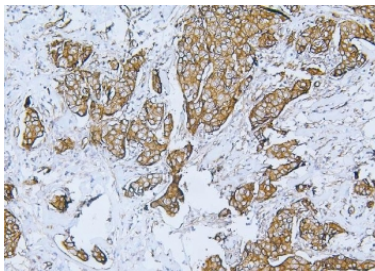
Flow cytometry testing of human U-2 OS cells with FLNB antibody at 1ug/million cells (blocked with goat sera); Red=cells alone, Green=isotype control, Blue= FLNB antibody.



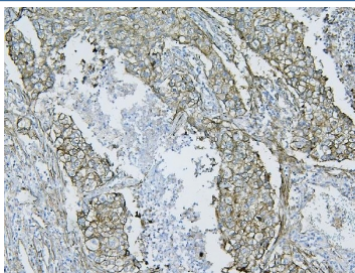
Western blot testing of 1) human A549, 2) human Caco-2, 3) human U-2 OS, 4) human HepG2, 5) rat liver, 6) mouse lung and 7) mouse ANA-1 cell lysate with FLNB antibody. Predicted molecular weight ~278 kDa.



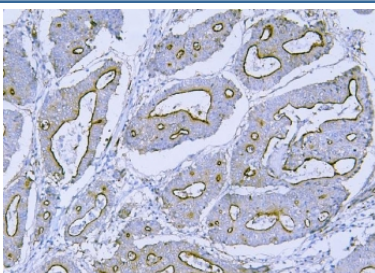
Immunofluorescent staining of FFPE human U-2 OS cells with FLNB antibody (green) and DAPI nuclear stain (blue). HIER: steam section in pH6 citrate buffer for 20 min.



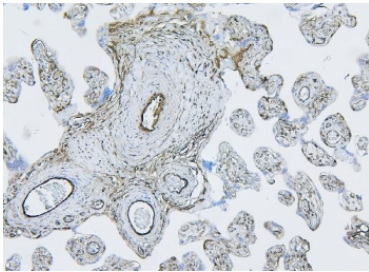
IHC staining of FFPE human breast cancer tissue with FLNB antibody. HIER: boil tissue sections in pH8 EDTA for 20 min and allow to cool before testing.



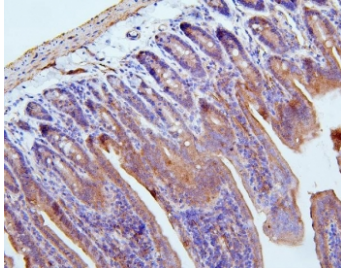
IHC staining of FFPE human lung cancer tissue with FLNB antibody. HIER: boil tissue sections in pH8 EDTA for 20 min and allow to cool before testing.



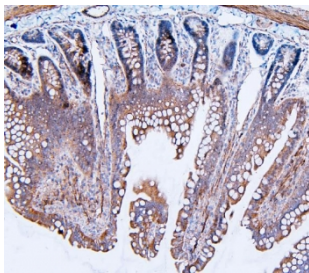
IHC staining of FFPE human rectal cancer tissue with FLNB antibody. HIER: boil tissue sections in pH8 EDTA for 20 min and allow to cool before testing.



IHC staining of FFPE human placental tissue with FLNB antibody. HIER: boil tissue sections in pH8 EDTA for 20 min and allow to cool before testing.



IHC staining of FFPE mouse intestinal tissue with FLNB antibody. HIER: boil tissue sections in pH8 EDTA for 20 min and allow to cool before testing.



IHC staining of FFPE rat intestinal tissue with FLNB antibody. HIER: boil tissue sections in pH8 EDTA for 20 min and allow to cool before testing.

Description

Filamin B, beta (FLNB), also known as Filamin B (truncated actin binding protein 278 homolog), is a cytoplasmic protein which in humans is encoded by the FLNB gene. This gene encodes a member of the filamin family. The encoded protein interacts with glycoprotein Ib alpha as part of the process to repair vascular injuries. The platelet glycoprotein Ib complex includes glycoprotein Ib alpha, and it binds the actin cytoskeleton. Mutations in this gene have been found in several conditions: atelosteogenesis type 1 and type 3; boomerang dysplasia; autosomal dominant Larsen syndrome; and spondylocarpotarsal synostosis syndrome. Multiple alternatively spliced transcript variants that encode different protein isoforms have been described for this gene.

Application Notes

Optimal dilution of the FLNB antibody should be determined by the researcher.

Immunogen

Recombinant human protein (amino acids Q397-D701) was used as the immunogen for the FLNB antibody.

Storage

After reconstitution, the FLNB antibody can be stored for up to one month at 4°C. For long-term, aliquot and store at -20°C. Avoid repeated freezing and thawing.

