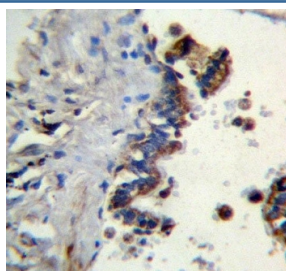


## Ficolin 3 Antibody / FCN3 (F54652)

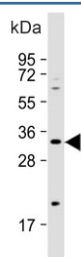
Catalog No.	Formulation	Size
F54652-0.4ML	In 1X PBS, pH 7.4, with 0.09% sodium azide	0.4 ml
F54652-0.08ML	In 1X PBS, pH 7.4, with 0.09% sodium azide	0.08 ml

[Bulk quote request](#)

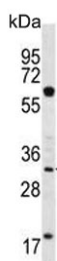
<b>Availability</b>	1-3 business days
<b>Species Reactivity</b>	Human
<b>Format</b>	Purified
<b>Clonality</b>	Polyclonal (rabbit origin)
<b>Isotype</b>	Rabbit Ig
<b>Purity</b>	Antigen affinity purified
<b>UniProt</b>	O75636
<b>Applications</b>	Flow Cytometry : 1:25 (1x10 <sup>6</sup> cells) Immunohistochemistry (FFPE) : 1:25 Western Blot : 1:500-1:2000
<b>Limitations</b>	This Ficolin 3 antibody is available for research use only.



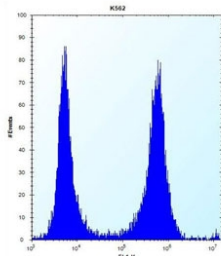
IHC testing of FFPE human lung tissue with Ficolin 3 antibody. HIER: steam section in pH6 citrate buffer for 20 min and allow to cool prior to staining.



Western blot testing of human Jurkat cell lysate with Ficolin 3 antibody. Predicted molecular weight ~33 kDa.



Western blot testing of human K562 cell lysate with Ficolin 3 antibody. Predicted molecular weight ~33 kDa.



Flow cytometry testing of human K562 cells with Ficolin 3 antibody; Left=isotype control, Right= Ficolin 3 antibody.

## Description

Ficolins are a group of proteins which consist of a collagen-like domain and a fibrinogen-like domain. In human serum, there are two types of ficolins, both of which have lectin activity. The protein encoded by this gene is a thermolabile beta-2-macroglycoprotein found in all human serum and is a member of the ficolin/opsonin p35 lectin family. The protein, which was initially identified based on its reactivity with sera from patients with systemic lupus erythematosus, has been shown to have a calcium-independent lectin activity. The protein can activate the complement pathway in association with MASPs and sMAP, thereby aiding in host defense through the activation of the lectin pathway. Alternative splicing occurs at this locus and two variants, each encoding a distinct isoform, have been identified.

## Application Notes

The stated application concentrations are suggested starting points. Titration of the Ficolin 3 antibody may be required due to differences in protocols and secondary/substrate sensitivity.

## Immunogen

A portion of amino acids 214-243 from the human protein was used as the immunogen for the Ficolin 3 antibody.

## Storage

Aliquot the Ficolin 3 antibody and store frozen at -20oC or colder. Avoid repeated freeze-thaw cycles.