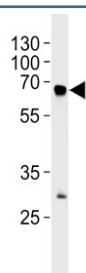


Fibrinogen alpha Antibody / FGA (F55117)

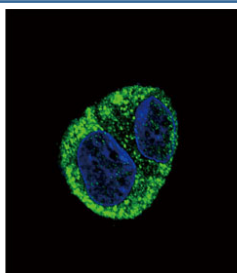
Catalog No.	Formulation	Size
F55117-0.4ML	In 1X PBS, pH 7.4, with 0.09% sodium azide	0.4 ml
F55117-0.08ML	In 1X PBS, pH 7.4, with 0.09% sodium azide	0.08 ml

[Bulk quote request](#)

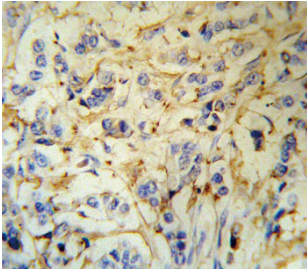
Availability	1-3 business days
Species Reactivity	Human
Format	Purified
Clonality	Polyclonal (rabbit origin)
Isotype	Rabbit Ig
UniProt	P02671
Applications	Western Blot : 1:500-1:1000 Immunohistochemistry (FFPE) : 1:10-1:50 Immunofluorescence : 1:10-1:50
Limitations	This Fibrinogen alpha antibody is available for research use only.



Western blot testing of human blood plasma lysate with Fibrinogen alpha antibody.
Predicted molecular weight ~70 kDa (alpha isoform), ~95 kDa (alpha-E isoform).



Immunofluorescent staining of fixed and permeabilized human HepG2 cells with Fibrinogen alpha antibody (green) and DAPI nuclear stain (blue).



IHC staining of FFPE human breast carcinoma tissue with Fibrinogen alpha antibody.
HIER: steam section in pH6 citrate buffer for 20 min and allow to cool prior to staining.

Description

Cleaved by the protease thrombin to yield monomers which, together with fibrinogen beta (FGB) and fibrinogen gamma (FGG), polymerize to form an insoluble fibrin matrix. Fibrin has a major function in hemostasis as one of the primary components of blood clots. In addition, functions during the early stages of wound repair to stabilize the lesion and guide cell migration during re-epithelialization.

Application Notes

The stated application concentrations are suggested starting amounts. Titration of the Fibrinogen alpha antibody may be required due to differences in protocols and secondary/substrate sensitivity.

Immunogen

A portion of amino acids 116-144 from the human protein was used as the immunogen for this Fibrinogen alpha antibody.

Storage

Store at 4oC for up to one month. For long term, aliquot the Fibrinogen alpha antibody and store frozen at -20oC or colder. Avoid repeated freeze-thaw cycles.