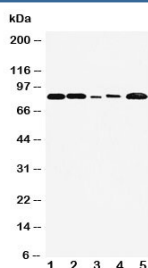


## FGFR1 Antibody (R30549)

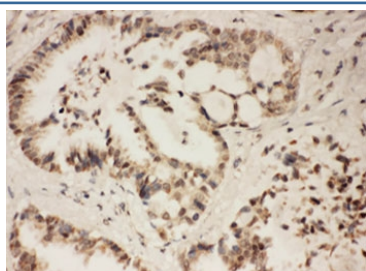
Catalog No.	Formulation	Size
R30549	0.5mg/ml if reconstituted with 0.2ml sterile DI water	100 ug

**Bulk quote request**

<b>Availability</b>	1-3 business days
<b>Species Reactivity</b>	Human, Mouse, Rat
<b>Format</b>	Antigen affinity purified
<b>Clonality</b>	Polyclonal (rabbit origin)
<b>Isotype</b>	Rabbit IgG
<b>Purity</b>	Antigen affinity
<b>Buffer</b>	Lyophilized from 1X PBS with 2.5% BSA and 0.025% sodium azide/thimerosal
<b>UniProt</b>	P11362
<b>Applications</b>	Western Blot : 0.5-1ug/ml IHC (FFPE) : 0.5-1ug/ml
<b>Limitations</b>	This FGFR1 antibody is available for research use only.



Western blot testing of FGFR1 antibody and Lane 1: rat liver; 2: rat brain; 3: SMMC-7721; 4: HT1080; 5: MM231 cell lysate. Predicted molecular weight: 75-160 kDa depending on glycosylation level.



IHC testing of FFPE human lung cancer tissue with FGFR1 antibody at 1ug/ml. HIER: steam section in pH6 citrate buffer for 20 min.

## Description

FGFR1, Fibroblast growth factor receptor 1, also known as basic fibroblast growth factor receptor 1, fms-related tyrosine kinase-2/Pfeiffer syndrome, and CD331, is a receptor tyrosine kinase whose ligands are specific members of the fibroblast growth factor family. The FGFR1 gene is localized to 8p12-p11.2 by in situ hybridization. FGFR1 is essential for the normal formation of the organ of Corti and that phenotype severity observed in FGFR1 mutants is dependent on the dose of FGFR1. Mutations in this gene have been associated with Pfeiffer syndrome, Jackson-Weiss syndrome, Antley-Bixler syndrome, osteoglophonic dysplasia, squamous cell lung cancer and autosomal dominant Kallmann syndrome 2.

## Application Notes

The stated application concentrations are suggested starting amounts. Titration of the FGFR1 antibody may be required due to differences in protocols and secondary/substrate sensitivity.

## Immunogen

An amino acid sequence from the C-terminus of human FGFR1 (CLPRHPAQLANGLKRR) was used as the immunogen for this FGFR1 antibody.

## Storage

After reconstitution, the FGFR1 antibody can be stored for up to one month at 4°C. For long-term, aliquot and store at -20°C. Avoid repeated freezing and thawing.