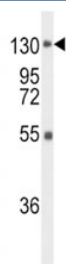


FGFR1 Antibody (F50616)

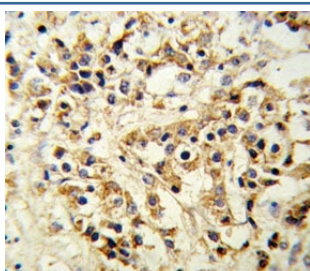
Catalog No.	Formulation	Size
F50616-0.4ML	In 1X PBS, pH 7.4, with 0.09% sodium azide	0.4 ml
F50616-0.08ML	In 1X PBS, pH 7.4, with 0.09% sodium azide	0.08 ml

[Bulk quote request](#)

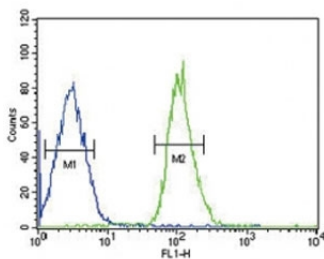
Availability	1-3 business days
Species Reactivity	Human
Format	Purified
Clonality	Polyclonal (rabbit origin)
Isotype	Rabbit Ig
Purity	Purified
UniProt	P11362
Applications	Western Blot : 1:1000 IHC (Paraffin) : 1:10-1:50 Flow Cytometry : 1:10-1:50
Limitations	This FGFR1 antibody is available for research use only.



Western blot analysis of FGFR1 antibody and mouse liver tissue lysate. Predicted molecular weight: 75-160 kDa depending on glycosylation level.



FGFR1 antibody IHC analysis in formalin fixed and paraffin embedded human breast carcinoma.



FGFR1 antibody FACS analysis of MCF-7 cells (bottom histogram) compared to a negative control (top histogram). FITC-conjugated goat-anti-rabbit secondary Ab was used for the analysis.

Description

FGFR1 is a member of the fibroblast growth factor receptor family, where amino acid sequence is highly conserved between members and throughout evolution. FGFR family members differ from one another in their ligand affinities and tissue distribution. A full-length representative protein consists of an extracellular region, composed of three immunoglobulin-like domains, a single hydrophobic membrane-spanning segment and a cytoplasmic tyrosine kinase domain. The extracellular portion of the protein interacts with fibroblast growth factors, setting in motion a cascade of downstream signals, ultimately influencing mitogenesis and differentiation. This particular family member binds both acidic and basic fibroblast growth factors and is involved in limb induction.

Application Notes

Titration of the FGFR1 antibody may be required due to differences in protocols and secondary/substrate sensitivity.

Immunogen

This FGFR1 antibody was produced from rabbits immunized with a human His fusion protein.

Storage

Aliquot the FGFR1 antibody and store frozen at -20oC or colder. Avoid repeated freeze-thaw cycles.