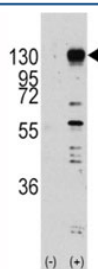


FGF Receptor Antibody (F50614)

| Catalog No. | Formulation | Size |
|---------------|--|---------|
| F50614-0.4ML | In 1X PBS, pH 7.4, with 0.09% sodium azide | 0.4 ml |
| F50614-0.08ML | In 1X PBS, pH 7.4, with 0.09% sodium azide | 0.08 ml |

[Bulk quote request](#)

| | |
|-----------------------------|--|
| Availability | 1-3 business days |
| Species Reactivity | Human |
| Predicted Reactivity | Chicken, Mouse, Rat, Xenopus, Zebrafish |
| Format | Antigen affinity purified |
| Clonality | Polyclonal (rabbit origin) |
| Isotype | Rabbit Ig |
| Purity | Antigen affinity |
| UniProt | P11362 |
| Applications | Western Blot : 1:1000 |
| Limitations | This FGF Receptor antibody is available for research use only. |



Western blot analysis of FGF receptor antibody and 293 cell lysate (2 ug/lane) either nontransfected (Lane 1) or transiently transfected with the FGFR1 gene (2). Predicted molecular weight: 75-160 kDa depending on glycosylation level.

Description

FGFR1 is a member of the fibroblast growth factor receptor family, where amino acid sequence is highly conserved between members and throughout evolution. FGFR family members differ from one another in their ligand affinities and tissue distribution. A full-length representative protein consists of an extracellular region, composed of three immunoglobulin-like domains, a single hydrophobic membrane-spanning segment and a cytoplasmic tyrosine kinase domain. The extracellular portion of the protein interacts with fibroblast growth factors, setting in motion a cascade of downstream signals, ultimately influencing mitogenesis and differentiation. This particular family member binds both acidic and basic fibroblast growth factors and is involved in limb induction. Mutations in this gene can lead to Pfeiffer

syndrome and Jackson-Weiss syndrome.

Application Notes

Titration of the FGF Receptor antibody may be required due to differences in protocols and secondary/substrate sensitivity.

Immunogen

A portion of amino acids 631-660 from the human protein was used as the immunogen for this FGF Receptor antibody.

Storage

Aliquot the FGF Receptor antibody and store frozen at -20oC or colder. Avoid repeated freeze-thaw cycles.