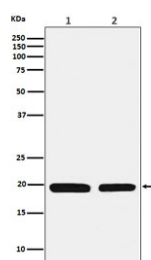


## Ferritin Light Chain Antibody / FTL [clone ACBG-6] (RQ5020)

Catalog No.	Formulation	Size
RQ5020	Antibody in PBS with 0.02% sodium azide, 50% glycerol and 0.4-0.5mg/ml BSA	100 ul

[Bulk quote request](#)

Availability	1-2 weeks
Species Reactivity	Human, Mouse
Format	Purified
Clonality	Rabbit Monoclonal
Isotype	Rabbit IgG
Clone Name	ACBG-6
Purity	Affinity purified
UniProt	P02792
Applications	Western Blot : 1:1000-1:5000
Limitations	This Ferritin Light Chain antibody is available for research use only.



Western blot testing of 1) human HepG2 and 2) mouse liver lysate with Ferritin Light Chain antibody. Predicted molecular weight ~20 kDa.

### Description

Stores iron in a soluble, non-toxic, readily available form. Important for iron homeostasis. Iron is taken up in the ferrous form and deposited as ferric hydroxides after oxidation. Also plays a role in delivery of iron to cells. Mediates iron uptake in capsule cells of the developing kidney. [UniProt]

### Application Notes

Optimal dilution of the Ferritin Light Chain antibody should be determined by the researcher.

### Immunogen

A synthetic peptide specific to human Ferritin Light Chain / FTL was used as the immunogen for the Ferritin Light Chain antibody.

## **Storage**

Store the Ferritin Light Chain antibody at -20oC.