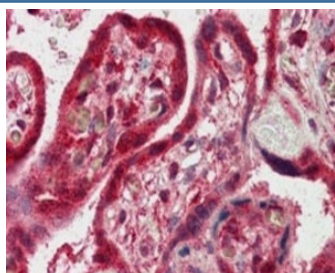


## FAPP2 Antibody (R33485)

Catalog No.	Formulation	Size
R33485-100UG	0.5 mg/ml in 1X TBS, pH7.3, with 0.5% BSA (US sourced) and 0.02% sodium azide	100 ug

[Bulk quote request](#)

Availability	1-3 business days
Species Reactivity	Human
Format	Antigen affinity purified
Clonality	Polyclonal (goat origin)
Isotype	Goat Ig
Purity	Antigen affinity
Gene ID	84725
Applications	Immunohistochemistry (FFPE) : 2-4ug/ml ELISA (peptide) LOD : 1:64000
Limitations	This FAPP2 antibody is available for research use only.



IHC testing of FFPE human placenta with FAPP2 antibody at 2.5ug/ml. HIER: steamed with pH6 citrate buffer, AP-staining.

### Description

Additional name(s) for this target protein: Pleckstrin homology domain containing, family A member 8; PLEKHA8

### Application Notes

Optimal dilution of the FAPP2 antibody should be determined by the researcher.

### Immunogen

Amino acids DIQTALRNPTENT were used as the immunogen for this FAPP2 antibody.

## Storage

Aliquot and store the FAPP2 antibody at -20oC.