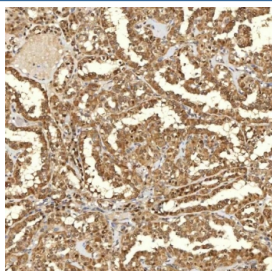


FAM60A Antibody / SINHCAF (RQ7654)

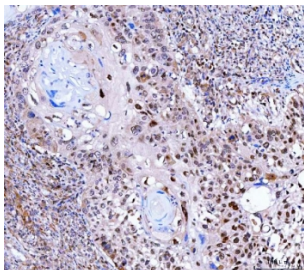
Catalog No.	Formulation	Size
RQ7654	0.5mg/ml if reconstituted with 0.2ml sterile DI water	100 ug

Bulk quote request

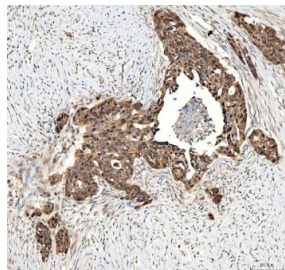
Availability	1-3 business days
Species Reactivity	Human, Rat
Format	Antigen affinity purified
Clonality	Polyclonal (rabbit origin)
Isotype	Rabbit IgG
Purity	Antigen affinity purified
Buffer	Lyophilized from 1X PBS with 2% Trehalose
UniProt	Q9NP50
Localization	Nuclear, cytoplasmic
Applications	Western Blot : 0.5-1ug/ml Immunohistochemistry (FFPE) : 2-5ug/ml Immunofluorescence : 5ug/ml Flow Cytometry : 1-3ug/million cells Direct ELISA : 0.1-0.5ug/ml
Limitations	This FAM60A antibody is available for research use only.



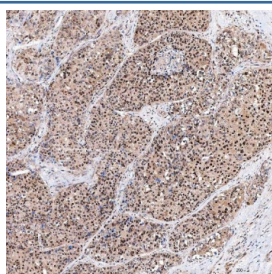
IHC staining of FFPE human thyroid cancer tissue with FAM60A antibody. HIER: boil tissue sections in pH8 EDTA for 20 min and allow to cool before testing.



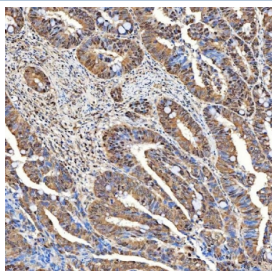
IHC staining of FFPE human laryngeal squamous cell carcinoma tissue with FAM60A antibody. HIER: boil tissue sections in pH8 EDTA for 20 min and allow to cool before testing.



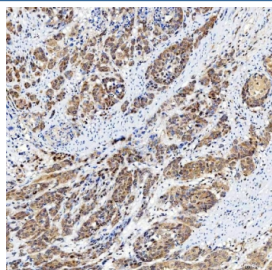
IHC staining of FFPE human ovarian serous adenocarcinoma tissue with FAM60A antibody. HIER: boil tissue sections in pH8 EDTA for 20 min and allow to cool before testing.



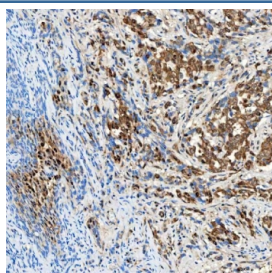
IHC staining of FFPE human liver cancer tissue with FAM60A antibody. HIER: boil tissue sections in pH8 EDTA for 20 min and allow to cool before testing.



IHC staining of FFPE human rectum adenocarcinoma tissue with FAM60A antibody. HIER: boil tissue sections in pH8 EDTA for 20 min and allow to cool before testing.



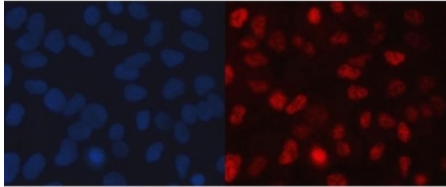
IHC staining of FFPE human prostate adenocarcinoma tissue with FAM60A antibody. HIER: boil tissue sections in pH8 EDTA for 20 min and allow to cool before testing.



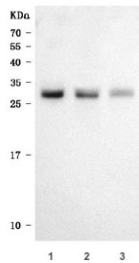
IHC staining of FFPE human lung adenocarcinoma tissue with FAM60A antibody. HIER: boil tissue sections in pH8 EDTA for 20 min and allow to cool before testing.



IHC staining of FFPE rat brain tissue with FAM60A antibody. HIER: boil tissue sections in pH8 EDTA for 20 min and allow to cool before testing.



Immunofluorescent staining of FFPE human A549 cells with FAM60A antibody (red) and DAPI nuclear stain (blue). HIER: steam section in pH6 citrate buffer for 20 min.



Western blot testing of human 1) MOLT-4, 2) SH-SY5Y and 3) Jurkat cell lysate with FAM60A antibody. Predicted molecular weight ~25 kDa.

Description

FAM60A, also known as Protein FAM60A, Tera protein homolog and SIN3-HDAC complex-associated factor (SINHCAF), is a subunit of the Sin3 deacetylase complex (Sin3/HDAC) that is important for the repression of genes. The SIN3A-HDAC complex deacetylates histones thereby repressing gene transcription. FAM60A specifically impacts genes encoding components of the TGF-beta signaling pathway and promoters of important proteins like cyclin D1. FAM60A activity peaks during G1 and S phases of the cell cycle and is up regulated in many carcinoma and tumor tissues. Additionally, loss of FAM60A leads to a change in cell morphology, an increase in cell migration, increased histone acetylation at the cyclin D1 promoter and elevated levels of cyclin D1 mRNA and protein. Furthermore, depletion of FAM60A altered the periodic association of HDAC1 with the cyclin D1 promoter, increased cyclin D1 expression at all cell cycle phases, and caused premature S phase entry.

Application Notes

Optimal dilution of the FAM60A antibody should be determined by the researcher.

Immunogen

E. coli-derived recombinant human protein (amino acids M1-W221) was used as the immunogen for the FAM60A antibody.

Storage

After reconstitution, the FAM60A antibody can be stored for up to one month at 4°C. For long-term, aliquot and store at -20°C. Avoid repeated freezing and thawing.

