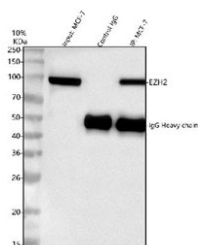


EZH2 Antibody (RQ5256)

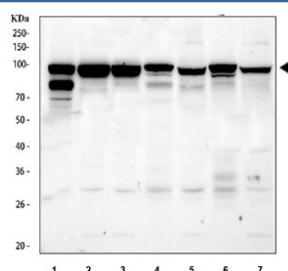
Catalog No.	Formulation	Size
RQ5256	0.5mg/ml if reconstituted with 0.2ml sterile DI water	100 ug

Bulk quote request

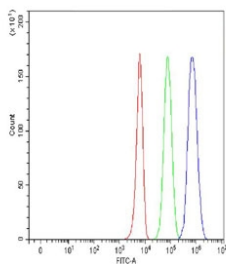
Availability	1-3 business days
Species Reactivity	Human, Mouse, Rat
Format	Antigen affinity purified
Clonality	Polyclonal (rabbit origin)
Isotype	Rabbit IgG
Purity	Affinity purified
Buffer	Lyophilized from 1X PBS with 2% Trehalose
UniProt	Q15910
Applications	Western Blot : 0.5-1ug/ml Flow Cytometry : 1-3ug/million cells Immunoprecipitation : 2ug/500ug of lysate Direct ELISA : 0.1-0.5ug/ml
Limitations	This EZH2 antibody is available for research use only.



Immunoprecipitation of EZH2 protein from 500ug of human MCF7 whole cell lysate with 2ug of EZH2 antibody.



Western blot testing of 1) human Jurkat, 2) human K562, 3) human MCF7, 4) rat spleen, 5) rat testis, 6) mouse spleen and 7) mouse testis tissue lysate with EZH2 antibody. Predicted molecular weight: 85-95 kDa.



Flow cytometry testing of fixed and permeabilized human K562 cells with EZH2 antibody at 1ug/million cells (blocked with goat sera); Red=cells alone, Green=isotype control, Blue= EZH2 antibody.

Description

Enhancer of zeste homolog 2 (EZH2) is a histone-lysine N-methyltransferase enzyme encoded by EZH2 gene. It is mapped to 7q36.1. This gene encodes a member of the Polycomb-group (PcG) family. PcG family members form multimeric protein complexes, which are involved in maintaining the transcriptional repressive state of genes over successive cell generations. This protein associates with the embryonic ectoderm development protein, the VAV1 oncoprotein, and the X-linked nuclear protein. This protein may play a role in the hematopoietic and central nervous systems. Multiple alternatively spliced transcript variants encoding distinct isoforms have been identified for this gene.

Application Notes

Optimal dilution of the EZH2 antibody should be determined by the researcher.

Immunogen

Amino acids E22-T345 from the human protein were used as the immunogen for the EZH2 antibody.

Storage

Store the EZH2 antibody at -20°C.