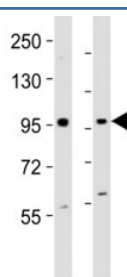


## EZH2 Antibody (F53360)

Catalog No.	Formulation	Size
F53360-0.4ML	In 1X PBS, pH 7.4, with 0.09% sodium azide	0.4 ml
F53360-0.08ML	In 1X PBS, pH 7.4, with 0.09% sodium azide	0.08 ml

[Bulk quote request](#)

<b>Availability</b>	1-3 business days
<b>Species Reactivity</b>	Human, Mouse
<b>Format</b>	Antigen affinity purified
<b>Clonality</b>	Polyclonal (rabbit origin)
<b>Isotype</b>	Rabbit Ig
<b>Purity</b>	Antigen affinity
<b>UniProt</b>	Q61188
<b>Applications</b>	Western Blot : 1:2000
<b>Limitations</b>	This EZH2 antibody is available for research use only.



Western blot testing of EZH2 antibody at 1:2000 dilution. Lane 1: mouse F9 lysate; 2: human K562 lysate; Predicted band size : 95 kDa.

## Description

Polycomb group (PcG) protein. Catalytic subunit of the PRC2/EED-EZH2 complex, which methylates (H3K9me) and 'Lys-27' (H3K27me) of histone H3, leading to transcriptional repression of the affected target gene. Able to mono-, di- and trimethylate 'Lys-27' of histone H3 to form H3K27me1, H3K27me2 and H3K27me3, respectively. Compared to EZH2-containing complexes, it is more abundant in embryonic stem cells and plays a major role in forming H3K27me3, which is required for embryonic stem cell identity and proper differentiation. The PRC2/EED-EZH2 complex may also serve as a recruiting platform for DNA methyltransferases, thereby linking two epigenetic repression systems. Genes repressed by the PRC2/EED-EZH2 complex include HOXA7, HOXB6 and HOXC8. EZH2 can also methylate non-histone proteins such as the transcription factor GATA4 and the nuclear receptor RORA. Regulates the circadian clock via

histone methylation at the promoter of the circadian genes. Essential for the CRY1/2-mediated repression of the transcriptional activation of PER1/2 by the CLOCK-ARNTL/BMAL1 heterodimer; involved in the di and trimethylation of 'Lys-27' of histone H3 on PER1/2 promoters which is necessary for the CRY1/2 proteins to inhibit transcription.

## Application Notes

Titration of the EZH2 antibody may be required due to differences in protocols and secondary/substrate sensitivity.

## Immunogen

This EZH2 antibody was produced from a rabbit immunized with a KLH conjugated synthetic peptide between 260-295 amino acids of mouse Ezh2.

## Storage

Aliquot the EZH2 antibody and store frozen at -20oC or colder. Avoid repeated freeze-thaw cycles.