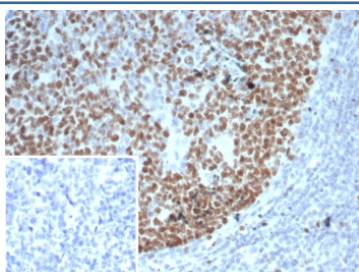


## EZH2 Antibody / Enhancer of zeste homolog 2 [clone EZH2/6989] (V5237)

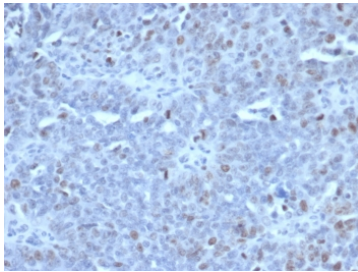
Catalog No.	Formulation	Size
V5237-100UG	0.2 mg/ml in 1X PBS with 0.1 mg/ml BSA (US sourced), 0.05% sodium azide	100 ug
V5237-20UG	0.2 mg/ml in 1X PBS with 0.1 mg/ml BSA (US sourced), 0.05% sodium azide	20 ug
V5237SAF-100UG	1 mg/ml in 1X PBS; BSA free, sodium azide free	100 ug

[Bulk quote request](#)

<b>Availability</b>	1-3 business days
<b>Species Reactivity</b>	Human
<b>Format</b>	Purified
<b>Clonality</b>	Monoclonal (mouse origin)
<b>Isotype</b>	Mouse IgG2a, kappa
<b>Clone Name</b>	EZH2/6989
<b>Purity</b>	Protein A/G affinity
<b>UniProt</b>	Q15910
<b>Localization</b>	Nucleus
<b>Applications</b>	Immunohistochemistry (FFPE) : 1-2ug/ml for 30 min at RT
<b>Limitations</b>	This EZH2 antibody is available for research use only.



IHC staining of FFPE human tonsil tissue with EZH2 antibody (clone EZH2/6989). Inset: PBS used in place of primary Ab (secondary Ab negative control). HIER: boil tissue sections in pH 9 10mM Tris with 1mM EDTA for 20 min and allow to cool before testing.



IHC staining of FFPE human tonsil tissue with EZH2 antibody (clone EZH2/6989). HIER: boil tissue sections in pH 9 10mM Tris with 1mM EDTA for 20 min and allow to cool before testing.

## Description

This gene encodes a member of the Polycomb-group (PcG) family. PcG family members form multimeric protein complexes, which are involved in maintaining the transcriptional repressive state of genes over successive cell generations. This protein associates with the embryonic ectoderm development protein, the VAV1 oncoprotein, and the X-linked nuclear protein. This protein may play a role in the hematopoietic and central nervous systems. Multiple alternatively spliced transcript variants encoding distinct isoforms have been identified for this gene.

## Application Notes

Optimal dilution of the EZH2 antibody should be determined by the researcher.

## Immunogen

Recombinant full-length human protein was used as the immunogen for the EZH2 antibody.

## Storage

Aliquot the EZH2 antibody and store frozen at -20°C or colder. Avoid repeated freeze-thaw cycles.