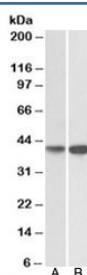


EXOG Antibody / ENDOGL1 / Endonuclease G-like 1 (R34348)

Catalog No.	Formulation	Size
R34348-100UG	0.5 mg/ml in 1X TBS, pH7.3, with 0.5% BSA (US sourced) and 0.02% sodium azide	100 ug

[Bulk quote request](#)

Availability	1-3 business days
Species Reactivity	Human
Format	Antigen affinity purified
Clonality	Polyclonal (goat origin)
Isotype	Goat Ig
Purity	Antigen affinity
Gene ID	9941
Applications	Western Blot : 0.1-0.3ug/ml ELISA (peptide) LOD : 1:128000
Limitations	This EXOG antibody is available for research use only.



Western blot testing of HepG2 [A] and Jurkat [B] lysates with EXOG antibody at 0.2ug/ml. Predicted molecular weight: ~41kDa.

Description

Additional name(s) for this target protein: Endo/exonuclease (5'-3'), endonuclease G-like

Application Notes

Optimal dilution of the EXOG antibody should be determined by the researcher.

Immunogen

Amino acids KAKEQSGTQIRKP were used as the immunogen for this EXOGantibody.

Storage

Aliquot and store the EXOG antibody at -20oC.