

## ETS1 Antibody [clone ETS1/1801] (V7758)

Catalog No.	Formulation	Size
V7758-100UG	0.2 mg/ml in 1X PBS with 0.1 mg/ml BSA (US sourced) and 0.05% sodium azide	100 ug
V7758-20UG	0.2 mg/ml in 1X PBS with 0.1 mg/ml BSA (US sourced) and 0.05% sodium azide	20 ug
V7758SAF-100UG	1 mg/ml in 1X PBS; BSA free, sodium azide free	100 ug

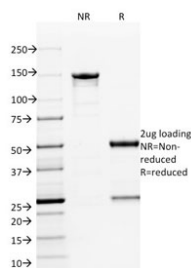
[Bulk quote request](#)

<b>Availability</b>	1-3 business days
<b>Species Reactivity</b>	Human
<b>Format</b>	Purified
<b>Clonality</b>	Monoclonal (mouse origin)
<b>Isotype</b>	Mouse IgG2b, kappa
<b>Clone Name</b>	ETS1/1801
<b>Purity</b>	Protein G affinity chromatography
<b>UniProt</b>	P14921
<b>Applications</b>	ELISA (order BSA-free Format For Coating) :
<b>Limitations</b>	This ETS1 antibody is available for research use only.

Human Protein Microarray Specificity Validation



Analysis of HuProt(TM) microarray containing more than 19,000 full-length human proteins using ETS1 antibody (clone ETS1/1801). These results demonstrate the foremost specificity of the ETS1/1801 mAb. <BR>Z- and S- score: The Z-score represents the strength of a signal that an antibody (in combination with a fluorescently-tagged anti-IgG secondary Ab) produces when binding to a particular protein on the HuProt(TM) array. Z-scores are described in units of standard deviations (SD&#39;s) above the mean value of all signals generated on that array. If the targets on the HuProt(TM) are arranged in descending order of the Z-score, the S-score is the difference (also in units of SD&#39;s) between the Z-scores. The S-score therefore represents the relative target specificity of an Ab to its intended target.



SDS-PAGE analysis of purified, BSA-free ETS1 antibody (clone ETS1/1801) as confirmation of integrity and purity.

## Description

ETS1 proto-oncogene is an important transcription factor that plays a role in cell proliferation and differentiation. ETS1 is related to the growth of carcinoma cells by its regulation of the transcription of matrix metalloproteinases and urokinase-type plasminogen activator. The processes of tumor invasion and metastasis depend on the increased proteolytic activity of the invading tumor cells that may involve matrix metalloproteinases, cathepsins B and D and plasminogen activator in the metastatic cascade. ETS1 is preferentially expressed in lymphoid cells, where it is essential for the maintenance of the normal pool of resting T and B cells. ETS1 expression level and distribution are differentially controlled in resting, activated and apoptotic lymphocytes.

## Application Notes

Optimal dilution of the ETS1 antibody should be determined by the researcher.

## Immunogen

A recombinant human partial protein (amino acids 137-230) was used as the immunogen for the ETS1 antibody.

## Storage

Store the ETS1 antibody at 2-8°C (with azide) or aliquot and store at -20°C or colder (without azide).