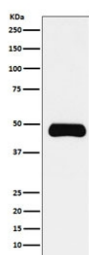


## ETS1 Antibody [clone ADAO-5] (RQ5436)

Catalog No.	Formulation	Size
RQ5436	Antibody in PBS with 0.02% sodium azide, 50% glycerol and 0.4-0.5mg/ml BSA	100 ul

[Bulk quote request](#)

Availability	1-2 weeks
Species Reactivity	Human, Mouse
Format	Purified
Clonality	Rabbit Monoclonal
Isotype	Rabbit IgG
Clone Name	ADAO-5
Purity	Affinity purified
UniProt	P14921
Applications	Western Blot : 1:500-1:2000
Limitations	This ETS1 antibody is available for research use only.



Western blot testing of human Daudi cell lysate with ETS1 antibody. Predicted molecular weight ~51 kDa.

## Description

The ETS1 gene encodes a member of the ETS family of transcription factors, which are defined by the presence of a conserved ETS DNA-binding domain that recognizes the core consensus DNA sequence GGAA/T in target genes. These proteins function either as transcriptional activators or repressors of numerous genes, and are involved in stem cell development, cell senescence and death, and tumorigenesis. Alternatively spliced transcript variants encoding different isoforms have been described for this gene. [RefSeq]

## Application Notes

Optimal dilution of the ETS1 antibody should be determined by the researcher.

## **Immunogen**

A synthetic peptide specific to human ETS1 was used as the immunogen for the ETS1 antibody.

## **Storage**

Store the ETS1 antibody at -20oC.