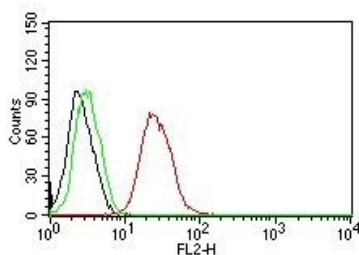


Estrogen Receptor beta Antibody PE Conjugate [clone ERb455] (V2115PE)

| Catalog No. | Formulation | Size |
|--------------|---|-----------|
| V2115PE-100T | 500 ul at 0.1 mg/ml with 0.1 mg/ml BSA (US sourced), 0.05% sodium azide | 100 Tests |

Bulk quote request

| | |
|--------------------|--|
| Availability | 1-3 business days |
| Species Reactivity | Human, Mouse, Rat |
| Format | PE Conjugate |
| Clonality | Monoclonal (mouse origin) |
| Isotype | Mouse IgG2a |
| Clone Name | ERb455 |
| Purity | Protein G affinity chromatography |
| Buffer | 1X PBS, pH 7.4 |
| UniProt | Q92731 |
| Gene ID | 2100 (Human) |
| Localization | Predominantly nuclear |
| Applications | Flow Cytometry : 5ul/test/million cells or 5ul/test/100ul of whole blood Immunofluorescence : 1:50-1:100 for 30 minutes at RT (1) |
| Limitations | This Estrogen Receptor beta antibody is available for research use only. |



FACS testing of human MCF-7 cells with Estrogen Receptor beta antibody (PE conjugate): Black=cells alone; Green=isotype control; Red=Estrogen Receptor beta antibody

Description

Estrogen receptors (ER) are members of the steroid/thyroid hormone receptor superfamily of ligand-activated transcription factors. Estrogen receptors, including alpha and beta, contain DNA binding and ligand binding domains and are critically involved in regulating the normal function of reproductive tissues. They are located in the nucleus, though

some estrogen receptors associate with the cell surface membrane and can be rapidly activated by exposure of cells to estrogen. ER alpha and beta are differentially activated by various ligands. Ligand interaction triggers a cascade of events, including dissociation from heat shock proteins, receptor dimerization, phosphorylation and the association of the hormone activated receptor with specific regulatory elements in target genes. Evidence suggests that ER alpha and beta may be regulated by distinct mechanisms even though they share many functional characteristics.

Application Notes

The concentration stated for each application is a general starting point. Variations in protocols, secondaries and substrates may require the Estrogen Receptor beta antibody to be titrated up or down for optimal performance.

Immunogen

The C-terminus fragment of recombinant human Estrogen Receptor beta protein was used as the immunogen for this antibody.

Storage

Store the Estrogen Receptor beta antibody at 2-8°C. Conjugate is light sensitive, store in the dark.

Alternate Names

Erb, ESR BETA, ESR2, ESRB, ESTRB, estrogen nuclear receptor beta variant a, estrogen nuclear receptor beta variant b, estrogen receptor 2 (ER beta), estrogen receptor beta 4, Estrogen receptor beta antibody

References (1)