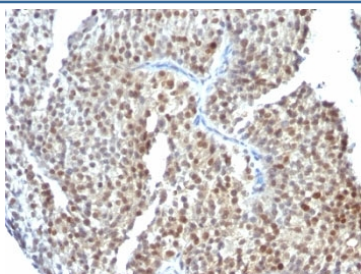


Estrogen Receptor beta Antibody [clone ESR2/686] (V2494)

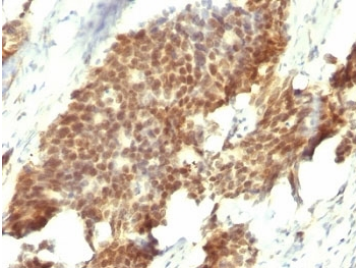
Catalog No.	Formulation	Size
V2494-100UG	0.2 mg/ml in 1X PBS with 0.1 mg/ml BSA (US sourced) and 0.05% sodium azide	100 ug
V2494-20UG	0.2 mg/ml in 1X PBS with 0.1 mg/ml BSA (US sourced) and 0.05% sodium azide	20 ug
V2494SAF-100UG	1 mg/ml in 1X PBS; BSA free, sodium azide free	100 ug
V2494IHC-7ML	Prediluted in 1X PBS with 0.1 mg/ml BSA (US sourced) and 0.05% sodium azide; *For IHC use only*	7 ml

[Bulk quote request](#)

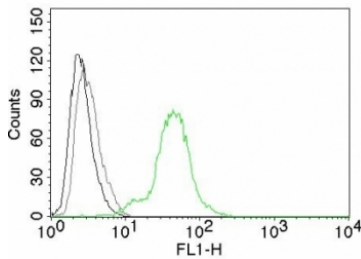
Availability	1-3 business days
Species Reactivity	Human
Format	Purified
Clonality	Monoclonal (mouse origin)
Isotype	Mouse IgG2a, kappa
Clone Name	ESR2/686
Purity	Protein G affinity chromatography
UniProt	Q92731
Localization	Predominantly nuclear
Applications	Flow Cytometry : 1-2ug/10 ⁶ cells Immunofluorescence : 1-2ug/ml Western Blot : 1-2ug/ml Immunohistochemistry (FFPE) : 1-2ug/ml for 30 min at RT
Limitations	This Estrogen Receptor beta antibody is available for research use only.



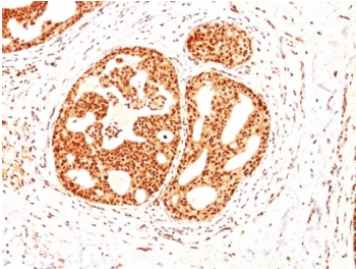
IHC: Formalin-fixed, paraffin-embedded human bladder carcinoma stained with Estrogen Receptor beta antibody (ESR2/686).



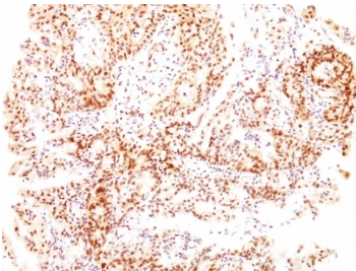
IHC: Formalin-fixed, paraffin-embedded human gastric carcinoma stained with Estrogen Receptor beta antibody (ESR2/686).



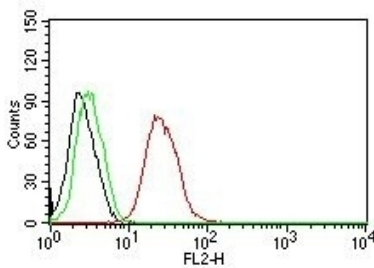
Flow cytometry testing of BT474 cells. Black: cells alone; Grey: isotype control; Green: AF488-labeled Estrogen Receptor beta antibody (ESR2/686).



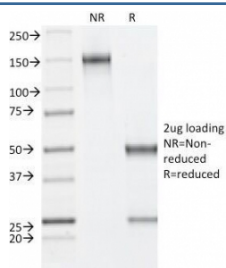
IHC: Formalin-fixed, paraffin-embedded human breast carcinoma stained with Estrogen Receptor beta antibody (ESR2/686).



IHC: Formalin-fixed, paraffin-embedded human ovarian carcinoma stained with Estrogen Receptor beta antibody (ESR2/686).



Flow cytometry testing of MCF-7 cells. Black: cells alone; Green: isotype control; Red: PE-labeled Estrogen Receptor beta antibody (ESR2/686).



SDS-PAGE Analysis of Purified, BSA-Free Estrogen Receptor beta Antibody (clone ESR2/686). Confirmation of Integrity and Purity of the Antibody.

Description

Estrogen receptors (ER) are members of the steroid/thyroid hormone receptor superfamily of ligand-activated transcription factors. Estrogen receptors, including ER-alpha and ER-beta, contain DNA binding and ligand binding domains and are critically involved in regulating the normal function of reproductive tissues. They are located in the nucleus, though some estrogen receptors associate with the cell surface membrane and can be rapidly activated by exposure of cells to estrogen. ER-alpha and ER-beta are differentially activated by various ligands. Receptor-ligand interactions trigger a cascade of events, including dissociation from heat shock proteins, receptor dimerization, phosphorylation and the association of the hormone activated receptor with specific regulatory elements in target genes. Evidence suggests that ER-alpha and ER-beta may be regulated by distinct mechanisms even though they share many functional characteristics.

Application Notes

Optimal dilution of the Estrogen Receptor beta antibody should be determined by the researcher.

1. The prediluted format is supplied in a dropper bottle and is optimized for use in IHC. After epitope retrieval step (if required), drip mAb solution onto the tissue section and incubate at RT for 30 min.

Immunogen

A C-terminus fragment of recombinant human ER-b protein was used as the immunogen for the Estrogen Receptor beta antibody.

Storage

Store the Estrogen Receptor beta antibody at 2-8oC (with azide) or aliquot and store at -20oC or colder (without azide).