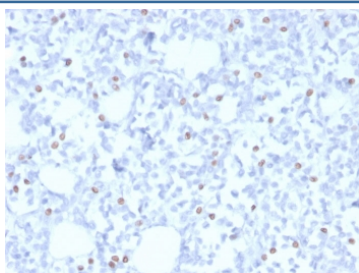


Estrogen Receptor beta 5 Antibody [clone PPG5/25] (V8669)

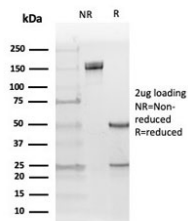
Catalog No.	Formulation	Size
V8669-100UG	0.2 mg/ml in 1X PBS with 0.1 mg/ml BSA (US sourced) and 0.05% sodium azide	100 ug
V8669-20UG	0.2 mg/ml in 1X PBS with 0.1 mg/ml BSA (US sourced) and 0.05% sodium azide	20 ug
V8669SAF-100UG	1 mg/ml in 1X PBS; BSA free, sodium azide free	100 ug

Bulk quote request

Availability	1-3 business days
Species Reactivity	Human
Format	Purified
Clonality	Monoclonal (mouse origin)
Isotype	Mouse IgG1, kappa
Clone Name	PPG5/25
Purity	Protein G affinity chromatography
UniProt	Q92731
Localization	Nuclear
Applications	Immunofluorescence : 2-4ug/ml Western Blot : 1-2ug/ml Immunohistochemistry (FFPE) : 1-2ug/ml for 30 minutes at RT
Limitations	This Estrogen Receptor beta 5 antibody is available for research use only.



IHC staining of FFPE human breast with Estrogen Receptor beta 5 antibody (clone PPG5/25). HIER: boil tissue sections in pH 9 10mM Tris with 1mM EDTA for 20 min and allow to cool before testing.



SDS-PAGE analysis of purified, BSA-free Estrogen Receptor beta 5 antibody (clone PPG5/25) as confirmation of integrity and purity.

Description

This MAb specifically recognizes human estrogen receptor beta 5 (ERB5), a splice variant of the nuclear receptor hormone ER beta (ESR2), shown to exist in at least five isoforms (ERB1-ERB5). No cross-reactivity is seen with estrogen receptor beta 1 or 2 isoform. This gene encodes a member of the family of estrogen receptors and superfamily of nuclear receptor transcription factors. The gene product contains an N-terminal DNA binding domain and C-terminal ligand binding domain and is localized to the nucleus, cytoplasm, and mitochondria. Upon binding to 17beta-estradiol or related ligands, the encoded protein forms homo- or hetero-dimers that interact with specific DNA sequences to activate transcription. Some isoforms dominantly inhibit the activity of other estrogen receptor family members.

Application Notes

Optimal dilution of the Estrogen Receptor beta 5 antibody should be determined by the researcher.

Immunogen

Amino acids LLSHVRHARYAP from the C-terminus of human Estrogen Receptor beta 5 were used as the immunogen for the Estrogen Receptor beta 5 antibody.

Storage

Store the Estrogen Receptor beta 5 antibody at 2-8oC (with azide) or aliquot and store at -20oC or colder (without azide).