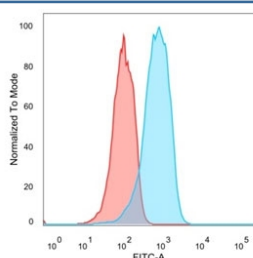


Estrogen Receptor beta 2 Antibody [clone 57/3] (V8668)

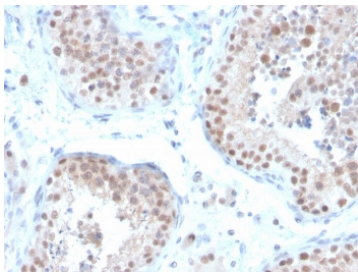
Catalog No.	Formulation	Size
V8668-100UG	0.2 mg/ml in 1X PBS with 0.1 mg/ml BSA (US sourced) and 0.05% sodium azide	100 ug
V8668-20UG	0.2 mg/ml in 1X PBS with 0.1 mg/ml BSA (US sourced) and 0.05% sodium azide	20 ug
V8668SAF-100UG	1 mg/ml in 1X PBS; BSA free, sodium azide free	100 ug

[Bulk quote request](#)

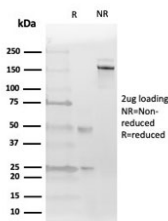
Availability	1-3 business days
Species Reactivity	Human
Format	Purified
Clonality	Monoclonal (mouse origin)
Isotype	Mouse IgG1, kappa
Clone Name	57/3
Purity	Protein G affinity chromatography
UniProt	Q92731
Localization	Nuclear
Applications	Flow Cytometry : 2-4ug/million cells Immunofluorescence : 2-4ug/ml Western Blot : 1-2ug/ml Immunohistochemistry (FFPE) : 1-2ug/ml for 30 minutes at RT
Limitations	This Estrogen Receptor beta 2 antibody is available for research use only.



Flow cytometry testing of PFA-fixed human MCF7 cells with Estrogen Receptor beta 2 antibody (clone 57/3); Red=isotype control, Blue= Estrogen Receptor beta 2 antibody.



IHC staining of FFPE human testis with Estrogen Receptor beta 2 antibody (clone 57/3).
HIER: boil tissue sections in pH 9 10mM Tris with 1mM EDTA for 20 min and allow to cool before testing.



SDS-PAGE analysis of purified, BSA-free Estrogen Receptor beta 2 antibody (clone 57/3) as confirmation of integrity and purity.

Description

This MAb recognizes the estrogen receptor beta 2 isoform, expressed in cell nuclei of a range of human tissues including ovary, placenta, testis and vas deferens. No cross-reactivity is seen with estrogen receptor beta 1 isoform. This gene encodes a member of the family of estrogen receptors and superfamily of nuclear receptor transcription factors. The gene product contains an N-terminal DNA binding domain and C-terminal ligand binding domain and is localized to the nucleus, cytoplasm, and mitochondria. Upon binding to 17beta-estradiol or related ligands, the encoded protein forms homo- or hetero-dimers that interact with specific DNA sequences to activate transcription. Some isoforms dominantly inhibit the activity of other estrogen receptor family members.

Application Notes

Optimal dilution of the Estrogen Receptor beta 2 antibody should be determined by the researcher.

Immunogen

Amino acids CGMKMETLLPEATMEQ from the C terminus of the human estrogen receptor beta 2 isomer were used as the immunogen for the Estrogen Receptor beta 2 antibody.

Storage

Store the Estrogen Receptor beta 2 antibody at 2-8oC (with azide) or aliquot and store at -20oC or colder (without azide).