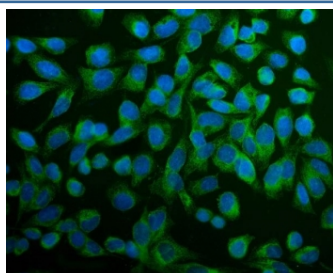


ERp5 Antibody / Endoplasmic reticulum protein 5 / PDIA6 (RQ6351)

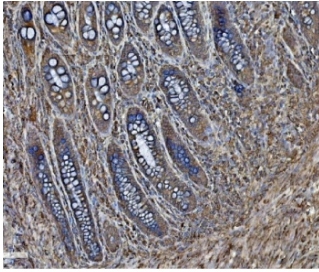
Catalog No.	Formulation	Size
RQ6351	0.5mg/ml if reconstituted with 0.2ml sterile DI water	100 ug

Bulk quote request

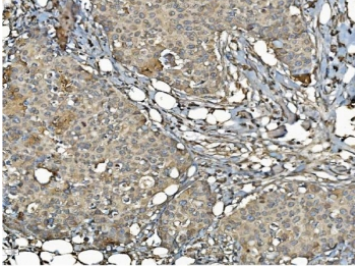
Availability	1-3 business days
Species Reactivity	Human, Mouse, Rat
Format	Purified
Clonality	Polyclonal (rabbit origin)
Isotype	Rabbit IgG
Purity	Antigen affinity purified
Buffer	Lyophilized from 1X PBS with 2% Trehalose
UniProt	Q15084
Localization	Cytoplasmic, cell membrane
Applications	Western Blot : 0.5-1ug/ml Immunohistochemistry (FFPE) : 2-5ug/ml Immunofluorescence (FFPE) : 5ug/ml Flow Cytometry : 1-3ug/million cells Direct ELISA : 0.1-0.5ug/ml
Limitations	This ERp5 antibody is available for research use only.



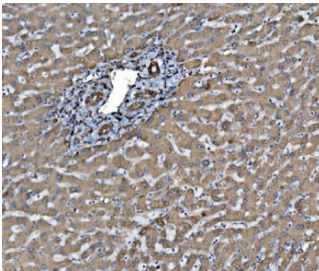
Immunofluorescent staining of FFPE human U-2 OS cells with ERp5 antibody (green) and DAPI nuclear stain (blue). HIER: steam section in pH6 citrate buffer for 20 min.



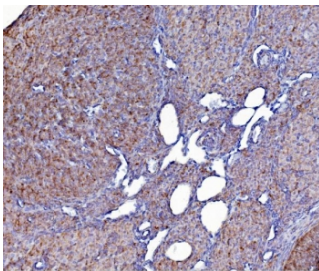
IHC staining of FFPE human rectal cancer with ERp5 antibody. HIER: boil tissue sections in pH8 EDTA for 20 min and allow to cool before testing.



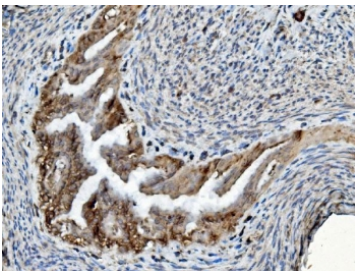
IHC staining of FFPE human breast cancer with ERp5 antibody. HIER: boil tissue sections in pH8 EDTA for 20 min and allow to cool before testing.



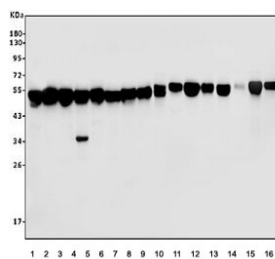
IHC staining of FFPE human liver cancer with ERp5 antibody. HIER: boil tissue sections in pH8 EDTA for 20 min and allow to cool before testing.



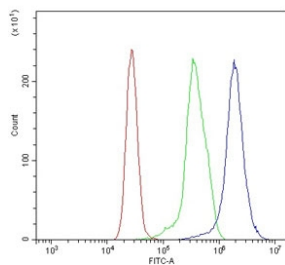
IHC staining of FFPE mouse ovary tissue with ERp5 antibody. HIER: boil tissue sections in pH8 EDTA for 20 min and allow to cool before testing.



IHC staining of FFPE rat ovary tissue with ERp5 antibody. HIER: boil tissue sections in pH8 EDTA for 20 min and allow to cool before testing.



Western blot testing of human 1) K562, 2) HepG2, 3) HT1080, 4) Raji, 5) HeLa, 6) HEK293, 7) ThP-1, 8) SH-SY5Y, 9) rat kidney, 10) rat heart, 11) rat liver, 12) rat lung, 13) mouse kidney, 14) mouse heart, 15) mouse liver and 16) mouse lung tissue lysate with ERp5 antibody. Predicted molecular weight ~48 kDa.



Flow cytometry testing of human K562 cells with ERp5 antibody at 1ug/million cells (blocked with goat sera); Red=cells alone, Green=isotype control, Blue= ERp5 antibody.

Description

This gene encodes a member of the disulfide isomerase (PDI) family of endoplasmic reticulum (ER) proteins that catalyze protein folding and thiol-disulfide interchange reactions. The encoded protein has an N-terminal ER-signal sequence, two catalytically active thioredoxin (TRX) domains, a TRX-like domain, and a C-terminal ER-retention sequence. This protein inhibits the aggregation of misfolded proteins and exhibits both isomerase and chaperone activity. Alternative splicing results in multiple transcript variants encoding different isoforms.

Application Notes

Optimal dilution of the ERp5 antibody should be determined by the researcher.

Immunogen

Recombinant human protein (amino acids L20-L440) was used as the immunogen for the ERp5 antibody.

Storage

After reconstitution, the ERp5 antibody can be stored for up to one month at 4oC. For long-term, aliquot and store at -20oC. Avoid repeated freezing and thawing.