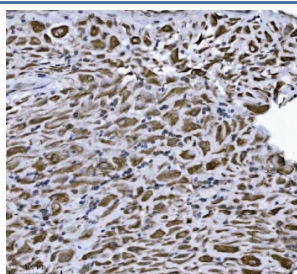


ERLIN2 Antibody [clone 3H9A2] (RQ7117)

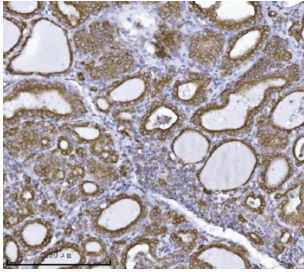
Catalog No.	Formulation	Size
RQ7117	0.5mg/ml if reconstituted with 0.2ml sterile DI water	100 ug

Bulk quote request

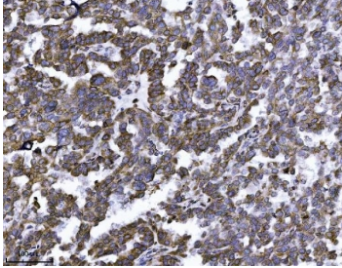
Availability	1-3 business days
Species Reactivity	Human
Format	Antigen affinity purified
Clonality	Monoclonal (mouse origin)
Isotype	Mouse IgG2b
Clone Name	3H9A2
Purity	Antigen affinity purified
Buffer	Lyophilized from 1X PBS with 2% Trehalose
UniProt	O94905
Localization	Cytoplasmic
Applications	Western Blot : 0.5-1ug/ml Immunohistochemistry (FFPE) : 2-5ug/ml Immunofluorescence : 5ug/ml Flow Cytometry : 1-3ug/million cells
Limitations	This ERLIN2 antibody is available for research use only.



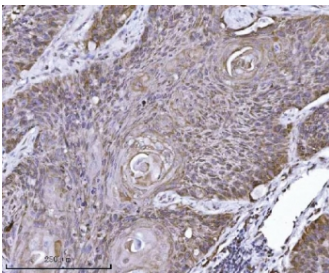
IHC staining of FFPE human placental tissue with ERLIN2 antibody. HIER: boil tissue sections in pH8 EDTA for 20 min and allow to cool before testing.



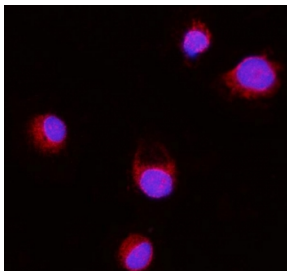
IHC staining of FFPE human thyroiditis tissue with ERLIN2 antibody. HIER: boil tissue sections in pH8 EDTA for 20 min and allow to cool before testing.



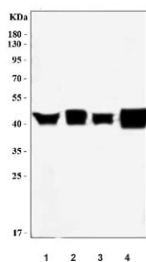
IHC staining of FFPE human ovarian serous carcinoma tissue with ERLIN2 antibody. HIER: boil tissue sections in pH8 EDTA for 20 min and allow to cool before testing.



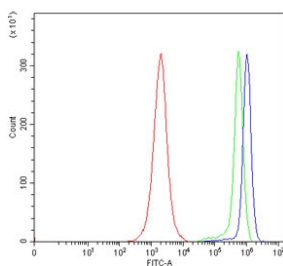
IHC staining of FFPE human squamous cell lung carcinoma tissue with ERLIN2 antibody. HIER: boil tissue sections in pH8 EDTA for 20 min and allow to cool before testing.



Immunofluorescent staining of FFPE human T-47D cells with ERLIN2 antibody (red) and DAPI nuclear stain (blue). HIER: steam section in pH6 citrate buffer for 20 min.



Western blot testing of human 1) HepG2, 2) T-47D, 3) HCCT and 4) HCCP cell lysate with ERLIN2 antibody. Predicted molecular weight ~38 kDa.



Flow cytometry testing of human JK cells with ERLIN2 antibody at 1ug/million cells (blocked with goat sera); Red=cells alone, Green=isotype control, Blue= ERLIN2 antibody.

Description

Erlin-2 is a protein that in humans is encoded by the ERLIN2 gene. This gene encodes a member of the SPFH domain-containing family of lipid raft-associated proteins. The encoded protein is localized to lipid rafts of the endoplasmic reticulum and plays a critical role in inositol 1,4,5-trisphosphate (IP3) signaling by mediating ER-associated degradation of activated IP3 receptors. Mutations in this gene are a cause of spastic paraplegia-18 (SPG18). Alternatively spliced transcript variants encoding multiple isoforms have been observed for this gene.

Application Notes

Optimal dilution of the ERLIN2 antibody should be determined by the researcher.

Immunogen

Recombinant human protein (amino acids D87-N339) was used as the immunogen for the ERLIN2 antibody.

Storage

After reconstitution, the ERLIN2 antibody can be stored for up to one month at 4°C. For long-term, aliquot and store at -20°C. Avoid repeated freezing and thawing.