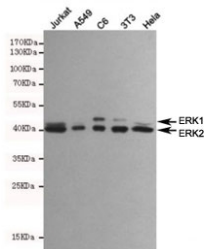


ERK1/2 Antibody / MAPK1/3 [clone 4F3-A10-E7] (F54025)

Catalog No.	Formulation	Size
F54025-0.1ML	In PBS with 50% glycerol and 0.03% ProClin 300	0.1 ml

[Bulk quote request](#)

Availability	1-3 business days
Species Reactivity	Human, Mouse, Rat
Format	Purified
Clonality	Monoclonal (mouse origin)
Isotype	Mouse IgG1
Clone Name	4F3-A10-E7
Purity	Protein G affinity
UniProt	P27361, P28482
Applications	Western Blot : 1:1000
Limitations	This ERK1/2 antibody is available for research use only.



Western blot testing of human Jurkat, human A549, rat C6, mouse NIH3T3 and human HeLa cell lysates using ERK1/2 antibody at 1:1000. Predicted molecular weight: ~44 kDa (ERK1), ~42 kDa (ERK2).

Description

Serine/threonine kinase which acts as an essential component of the MAP kinase signal transduction pathway. MAPK1/ERK2 and MAPK3/ERK1 are the 2 MAPKs which play an important role in the MAPK/ERK cascade. They participate also in a signaling cascade initiated by activated KIT and KITLG/SCF. Depending on the cellular context, the MAPK/ERK cascade mediates diverse biological functions such as cell growth, adhesion, survival and differentiation through the regulation of transcription, translation, cytoskeletal rearrangements.

Application Notes

The stated application concentrations are suggested starting points. Titration of the ERK1/2 antibody may be required

due to differences in protocols and secondary/substrate sensitivity.

Immunogen

A synthetic peptide corresponding to a portion of human ERK1 was used as the immunogen for this ERK1/2 antibody.

Storage

Store the ERK1/2 antibody at -20oC.