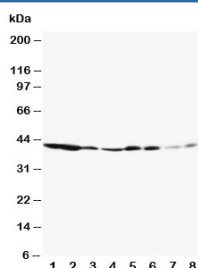


## ERK1 Antibody / MAPK3 (R30409)

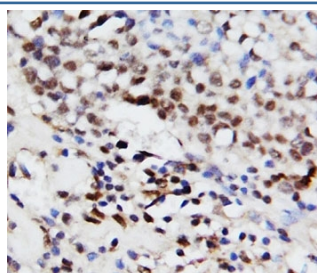
Catalog No.	Formulation	Size
R30409	0.5mg/ml if reconstituted with 0.2ml sterile DI water	100 ug

**Bulk quote request**

<b>Availability</b>	1-3 business days
<b>Species Reactivity</b>	Human, Mouse, Rat
<b>Format</b>	Antigen affinity purified
<b>Clonality</b>	Polyclonal (rabbit origin)
<b>Isotype</b>	Rabbit IgG
<b>Purity</b>	Antigen affinity
<b>Buffer</b>	Lyophilized from 1X PBS with 2.5% BSA and 0.025% sodium azide/thimerosal
<b>UniProt</b>	P27361
<b>Applications</b>	Western Blot : 0.5-1ug/ml IHC (FFPE) : 0.5-1ug/ml Immunocytochemistry : 0.5-1ug/ml
<b>Limitations</b>	This ERK1 antibody is available for research use only.



Western blot testing of ERK1 antibody and Lane 1: rat spleen; 2: rat thymus; 3: rat skeletal muscle; 4: rat kidney; 5: HeLa; 6: Jurkat; 7: Raji; 8: COLO320. Predicted molecular weight: ~44 kDa.



IHC-P: ERK1 antibody testing of human breast cancer tissue

## Description

Mitogen-activated protein kinase 3 is an enzyme that in humans is encoded by the MAPK3 gene. The protein encoded by this gene is a member of the MAP kinase family. MAP kinases, also known as extracellular signal-regulated kinases (ERKs), act in a signaling cascade that regulates various cellular processes such as proliferation, differentiation, and cell cycle progression in response to a variety of extracellular signals. This kinase is activated by upstream kinases, resulting in its translocation to the nucleus where it phosphorylates nuclear targets. Alternatively spliced transcript variants encoding different protein isoforms have been described. MAPK3 gene is mapped to human chromosome 16 by hybrid cell panel analysis.

## Application Notes

The stated application concentrations are suggested starting amounts. Titration of the ERK1 antibody may be required due to differences in protocols and secondary/substrate sensitivity.

## Immunogen

An amino acid sequence from the middle region of human ERK1 (KTKVAWAKLFPKSDS) was used as the immunogen for this ERK1 antibody (100% homologous in human, mouse and rat).

## Storage

After reconstitution, the ERK1 antibody can be stored for up to one month at 4°C. For long-term, aliquot and store at -20°C. Avoid repeated freezing and thawing.