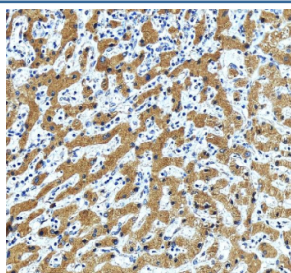


## ERGIC1 Antibody / ERGIC-32 (RQ7397)

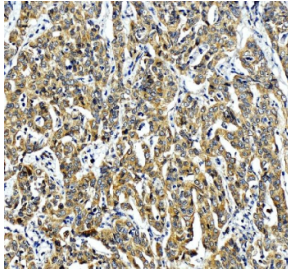
Catalog No.	Formulation	Size
RQ7397	0.5mg/ml if reconstituted with 0.2ml sterile DI water	100 ug

**Bulk quote request**

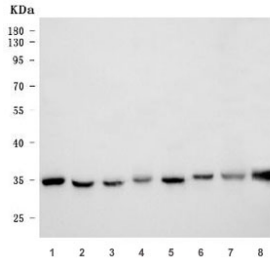
<b>Availability</b>	1-3 business days
<b>Species Reactivity</b>	Human, Mouse, Rat
<b>Format</b>	Antigen affinity purified
<b>Clonality</b>	Polyclonal (rabbit origin)
<b>Isotype</b>	Rabbit IgG
<b>Purity</b>	Antigen affinity purified
<b>Buffer</b>	Lyophilized from 1X PBS with 2% Trehalose
<b>UniProt</b>	Q969X5
<b>Localization</b>	Cytoplasm (ER)
<b>Applications</b>	Western Blot : 0.5-1ug/ml Flow Cytometry : 1-3ug/million cells Immunofluorescence : 5ug/ml Immunoprecipitation : 2ug/500ug of lysate Direct ELISA : 0.1-0.5ug/ml Immunohistochemistry (FFPE) : 2-5ug/ml
<b>Limitations</b>	This ERGIC1 antibody is available for research use only.



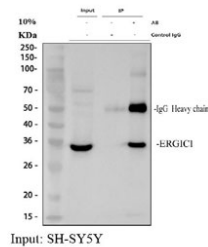
IHC staining of FFPE human liver tissue with ERGIC1 antibody, HRP-labeled secondary and DAB substrate. HIER: boil tissue sections in pH8 EDTA for 20 min and allow to cool before testing.



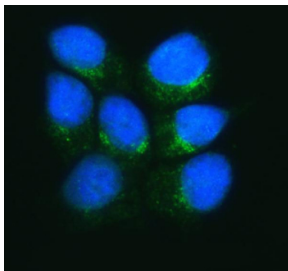
IHC staining of FFPE human liver cancer tissue with ERGIC1 antibody, HRP-labeled secondary and DAB substrate. HIER: boil tissue sections in pH8 EDTA for 20 min and allow to cool before testing.



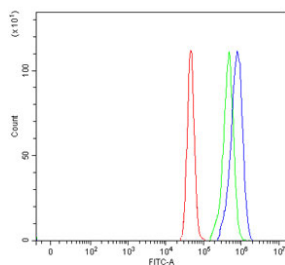
Western blot testing of 1) human HepG2, 2) human U-87 MG, 3) rat brain, 4) rat liver, 5) rat RH35, 6) mouse brain, 7) mouse liver and 8) mouse NIH 3T3 cell lysate with ERGIC1 antibody. Predicted molecular weight ~33 kDa.



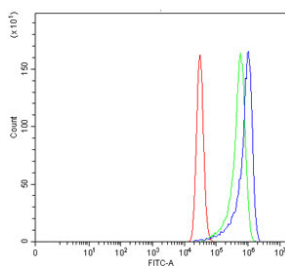
Immunoprecipitation of ERGIC1 protein from 500ug of human SH-SY5Y whole cell lysate with 2ug of ERGIC1 antibody.



Immunofluorescent staining of FFPE human MCF7 cells with ERGIC1 antibody (green) and DAPI nuclear stain (blue). HIER: steam section in pH6 citrate buffer for 20 min.



Flow cytometry testing of fixed and permeabilized human U-87 MG cells with ERGIC1 antibody at 1ug/million cells (blocked with goat sera); Red=cells alone, Green=isotype control, Blue= ERGIC1 antibody.



Flow cytometry testing of fixed and permeabilized human MCF7 cells with ERGIC1 antibody at 1ug/million cells (blocked with goat sera); Red=cells alone, Green=isotype control, Blue= ERGIC1 antibody.

