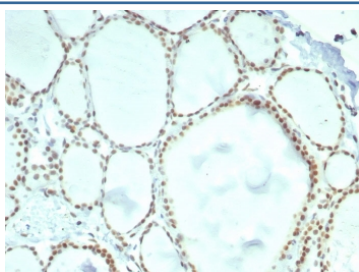


ERCC1 Antibody [clone ERCC1/7596] (V4634)

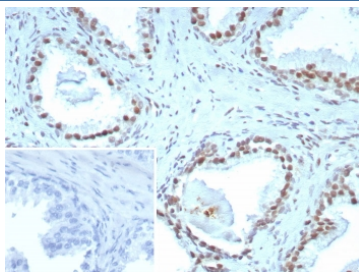
Catalog No.	Formulation	Size
V4634-100UG	0.2 mg/ml in 1X PBS with 0.1 mg/ml BSA (US sourced), 0.05% sodium azide	100 ug
V4634-20UG	0.2 mg/ml in 1X PBS with 0.1 mg/ml BSA (US sourced), 0.05% sodium azide	20 ug
V4634SAF-100UG	1 mg/ml in 1X PBS; BSA free, sodium azide free	100 ug

[Bulk quote request](#)

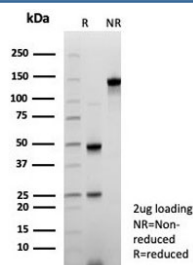
Availability	1-3 business days
Species Reactivity	Human
Format	Purified
Clonality	Monoclonal (mouse origin)
Isotype	Mouse IgG2b, kappa
Clone Name	ERCC1/7596
Purity	Protein A/G affinity
UniProt	P07992
Localization	Nucleus
Applications	Immunohistochemistry (FFPE) : 1-2ug/ml for 30 min at RT
Limitations	This ERCC1 antibody is available for research use only.



IHC staining of FFPE human thyroid tissue with ERCC1 antibody (clone ERCC1/7596).
 HIER: boil tissue sections in pH 9 10mM Tris with 1mM EDTA for 20 min and allow to cool before testing.



IHC staining of FFPE human prostate tissue with ERCC1 antibody (clone ERCC1/7596). Inset: PBS used in place of primary Ab (secondary Ab negative control). HIER: boil tissue sections in pH 9 10mM Tris with 1mM EDTA for 20 min and allow to cool before testing.



SDS-PAGE analysis of purified, BSA-free ERCC1 antibody (clone ERCC1/7596) as confirmation of integrity and purity.

Description

Recognizes a protein of 110kDa, identified as Excision Repair Cross Complementing 1 (ERCC1). It is a mammalian nucleotide excision repair (NER) enzyme involved in repair of damaged DNA. ERCC1 is a homologous to RAD10 in *Saccharomyces cerevisiae*, which is required in mitotic intrachromosomal recombination and repair. ERCC1 is required in repair of cisplatin-induced DNA adducts and ultraviolet (UV)-induced DNA damage. High expression of ERCC1 has been linked to tumor progression in a variety of cancers including non-small cell lung cancer (NSCLC), squamous cell carcinoma of the head, ovarian cancer and esophageal cancer.

Application Notes

Optimal dilution of the ERCC1 antibody should be determined by the researcher.

Immunogen

A recombinant partial protein sequence (within amino acids 191-281) from the human protein was used as the immunogen for the ERCC1 antibody.

Storage

Aliquot the ERCC1 antibody and store frozen at -20oC or colder. Avoid repeated freeze-thaw cycles.