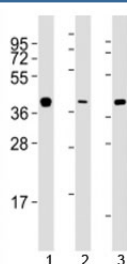


## ERCC1 Antibody [clone 752CT13.2.5] (F52220)

Catalog No.	Formulation	Size
F52220-0.4ML	In 1X PBS, pH 7.4, with 0.09% sodium azide	0.4 ml
F52220-0.08ML	In 1X PBS, pH 7.4, with 0.09% sodium azide	0.08 ml

[Bulk quote request](#)

<b>Availability</b>	1-3 business days
<b>Species Reactivity</b>	Human
<b>Format</b>	Purified
<b>Clonality</b>	Monoclonal (mouse origin)
<b>Isotype</b>	Mouse IgM, k
<b>Clone Name</b>	752CT13.2.5
<b>Purity</b>	Purified
<b>UniProt</b>	P07992
<b>Applications</b>	Western Blot : 1:1000
<b>Limitations</b>	This ERCC1 antibody is available for research use only.



Western blot testing of ERCC1 antibody at 1:2000 dilution. Lane 1: A549 lysate; 2: HeLa lysate; 3: T47D lysate. Predicted molecular weight ~36kDa.

## Description

Structure-specific DNA repair endonuclease responsible for the 5'-incision during DNA repair.

## Application Notes

Titration of the ERCC1 antibody may be required due to differences in protocols and secondary/substrate sensitivity.

## Immunogen

A portion of amino acids 268-297 from the human protein was used as the immunogen for this ERCC1 antibody.

## Storage

Aliquot the ERCC1 antibody and store frozen at -20oC or colder. Avoid repeated freeze-thaw cycles.